

# **CANTERBURY SPACES AND PLACES PLAN A REGIONAL APPROACH TO SPORTING FACILITIES**

**DECEMBER 2017**

Sport Canterbury and the Greater Christchurch Partnership



# Introduction

---

Sport Canterbury approached the Greater Christchurch Partnership Committee in late 2016 with the concept of developing a Regional Sports Facilities Plan. The Committee gave the mandate to develop the plan and Sport Canterbury lead the process. This document was presented in draft in November 2017 and the Committee then unanimously agreed the following resolutions.

1. Receive the presentation and draft Canterbury Spaces and Places Plan.
2. Request that Councils and other Partners use the draft Plan as part of deliberations regarding Long Term Plans and other strategic and regeneration planning.
3. Note that the draft Plan will be circulated to the sports sector for comment and is likely to be periodically updated as new and more detailed information becomes available.
4. Request that Chief Executives Agency Group work with Sport Canterbury in advancing how the Plan can be advanced, including appropriate implementation and funding arrangements at a Greater Christchurch and Canterbury level.

Sport Canterbury would like to thank the many local, regional and national sporting groups who provided information for the plan and the following organisations for their commitment and input into developing the plan.

## Greater Christchurch Partnership Member Organisations



Te Rūnanga o NGĀI TAHU



## Other Contributing Territorial Authorities



With special thanks to



# Foreword

---

Through its Community Sport and High Performance Sport Strategies, Sport New Zealand (Sport NZ) aims to enrich and inspire New Zealanders to develop a life-long love of participating in community sport and produce more winners on the world stage. Locally-led development of spaces and places for sport and active recreation that provide quality experiences for participants are critical to this success.

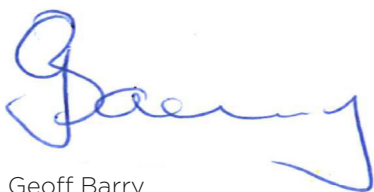
Sport NZ is committed to supporting national and regional sport organisations, local government and others with an interest in the planning, design, procurement, construction and operating of more affordable and sustainable sport and recreation spaces and places.

With leadership from the network of Regional Sports Trusts, Sport NZ is supporting and enabling better decision-making and investment for future sporting spaces and places. Sport NZ believes better decisions will be made through a collaborative regional approach if they involve local and regional government, education, funders, national and regional sports organisations.

The drivers for taking a regional approach to facility planning can be one or more of the following:

- The desire of funders to invest wisely in identified priority projects that will make the most impact.
- An ageing network of facilities needing refurbishment, re-purposing, replacement or removal.
- Changing demographics within a community, such as an increase in the population.
- Changing participation trends nationally and within a region requiring new types of facilities, or a new use of an existing facility.
- Increasing expectations of users and user groups.
- A growing acknowledgement that there is a hierarchy of facilities and that regional collaboration is the only fair and reasonable way to build and manage international, national, regional and sub-regional facilities.
- The risks inherent in focussing on and responding to the wants rather than the priority needs within a region.

Sport Canterbury and its local government and funding partners are to be commended for taking a collaborative approach to develop a strategic region-wide view of what needs exist and identifying those priority projects for future spaces and places provision that will grow and sustain participation in community sport.



Geoff Barry  
General Manager, Community Sport



# Executive Summary

---

The purpose of this report is to provide a preliminary snap shot of the current and planned sporting facilities network for the area defined by the territorial boundaries of Ashburton District Council, Selwyn District Council, Christchurch City Council, Waimakariri District Council and Hurunui District Council<sup>1</sup>.

The benefits of participation in sport are well documented. Sport and recreation facilities play a key role in generating economic activity within Canterbury. In a recent study, the value of sport and recreation's contribution to the wider Canterbury / West Coast area was estimated at \$382.3m per annum (or 1.3% of GDP for the area)<sup>2</sup>. The benefits of sport and recreation go far wider than the economic value. Sport and recreation offer social, cultural and physical benefits to individuals, family/whanau and the wider community.

The initial assessment of the current and future sporting facility needs has used a hierarchal approach to understand potential gaps in facility provision. This report focusses predominately on projects that impact on participants across territorial authority boundaries. As such, local projects are omitted, unless there is evidence to suggest projects will impact on the wider network of facilities.

The facility hierarchy and assessment criteria used in this report were adapted from well-tested and refined principles used in other similar national and regional sports facilities plans.

## Existing Network

The existing network of facilities at a Regional level and above is well understood and described in Appendix 1. When assessing priorities for future facilities this network has been taken into consideration as described.

## Planned Projects

There are a number of projects currently underway that will play a significant role in filling gaps in the network of sporting facilities. These are outlined in the following table. As these projects are sufficiently well progressed or planned they have been considered as effectively part of the existing network and therefore they have not been ranked or prioritised.

<sup>1</sup> For the sake of simplicity this area is called Canterbury, acknowledging that the Canterbury province includes other territorial authority areas and therefore generally covers a wider region. Sport Canterbury is working with the Timaru, Waimate and Mackenzie District Councils to develop a South Canterbury Spaces and Places Plan.

<sup>2</sup> Sport New Zealand, 2015. The Economic Value of Sport and Recreation to the Canterbury/West Coast Region. Wellington: Sport New Zealand.

**Table 1: Planned Projects**

PROJECT NAME	PROJECT LEADER	PROJECT DESCRIPTION	PROPOSED HIERARCHY STATUS	SPORTS THAT WILL BENEFIT
Multi-Use Arena	Christchurch CC	Business Case to determine the relative merits of a multi-use arena to cater for major events and sporting activities	International	Comprehensive range of opportunities across multiple codes, predominantly Rugby, Football, Rugby League
Metro Sports Facility	Otakaro Ltd / Christchurch CC	Development of a multi-use venue with aquatic and indoor court facilities as well as a regional high-performance training venue and sports house	International	Swimming, Diving, Water Polo Netball, Basketball, Volleyball Badminton, Table Tennis, Futsal
Nga Puna Wai Sports Park (stage one)	Christchurch CC	Multi-use sports park to cater for Athletics, Tennis, Hockey, Rugby League and other sports	International	Athletics, Hockey, Rugby League, Tennis, Touch, Rugby, Football
Christchurch Adventure Park	Christchurch Adventure Park	Reinstatement of the Christchurch Adventure Park after the Port Hills fires	International	Mountain Biking
Christchurch Squash Club	Christchurch Squash Club and Cashmere Club	Development of an eight-court facility that will attract national and international events	International	Squash
Waimakariri District Council Indoor Courts	Waimakariri DC	Development of four court multi-use venue in Rangiora to service range of sports codes	Regional	Netball, Basketball, Volleyball Badminton, Table Tennis, Futsal
Foster Park Sports Field Developments	Selwyn DC	Development of Softball diamonds to service needs of participants	Regional	Softball, Baseball Football
Kaiapoi Regeneration Area	Waimakariri DC	The development of a large area of land within Kaiapoi for various recreation and sport activities	Regional	Softball Rugby League
QEII Park Aquatic Centre	Christchurch CC	Development of sub-regional Aquatic facility	Sub-regional	Swimming
Hornby Aquatic Centre	Christchurch CC	Development of sub-regional / local Aquatic facility	Sub-regional / Local	Swimming, Diving, Water Polo
Development of multi-purpose indoor sports facility by Celebration Church	Celebration Church	Multi-purpose indoor sports facility including: 200m indoor running track High Performance (weight) training facilities 2 basketball-sized courts 'Play for pay' courts for indoor netball, cricket and football	Sub-regional	Pay-to-play Indoor sports (netball, cricket and futsal) Athletics Basketball High Performance
Badminton Facility	Private individual in partnership with Badminton Canterbury	Multi-court dedicated indoor badminton facility in Wigram.	Sub-regional	Badminton

## Proposed Projects

There are additional projects that have been identified during the process of preparing this report that are not currently planned for by the community and/or within council long term plans (2015-25). The table below highlights those additional projects that have been identified to improve the current network of sporting facilities. A preliminary assessment and priority ranking has taken place. The projects have been identified through feedback from sporting codes and an initial desk top review of existing council and stakeholder plans.

PROJECT NAME	PROJECT DESCRIPTION	PROPOSED HIERARCHY STATUS	SPORTS THAT WILL BENEFIT	PROPOSED PRIORITY High = 1-3 years Medium = 4-10 years Low = 11-20 years
Naval Point Multi-Sport Marine Venue	Development of multi-use venue that provides access to the marine environment in an all-weather/all tide environment	Regional	Yachting, Waka Ama,	High
Foster Park Community Courts	Proposed development of multi-court venue to service the needs of Selwyn and surrounding areas sport and community activity needs.	Regional	Netball, Basketball, Volleyball, Badminton, Table Tennis, Futsal	High
Denton Park Outdoor Velodrome	Further work required to determine the future requirements required from Denton Oval to service cycling	Regional	Track Cycling	High
Home of Football	Investigate options to meet the increasing demands on the current 'home of football' at English Park.	Regional	Football	High
National Equestrian Centre	Development of large indoor arena, additional covered yards and other amenity buildings at McLean's Island	Regional	Dressage, Endurance, Eventing, Para-Equestrian and Show Jumping	Medium
Nga Puna Wai Sports Park (stage two)	Additional assets for Multi-use sports park. Stage two includes: 2nd athletics track Spectator Seating & Amenities Hockey and Rugby League Indoor Tennis 3rd Hockey Turf Admin	International	Athletics, Hockey, Rugby League, Tennis, Touch, Rugby, Football	Medium
Christchurch School of Gymnastics	New facility to replace EQ damaged venue	Regional	Gymnastics	Medium
Olympia Gym Sports	Upgrading venue	Regional	Gymnastics	Medium
Cuthbert's Green Artificial	Development of artificial outfield for two Softball diamond at Cuthbert's Green that could also be utilised by winter codes, in particular, football.	National	Softball, Football	
Indoor Community Courts Project	Development of a multi-court community indoor venue for sports	To be determined	Netball, Football and potentially others	Requires further detail for assessment

PROJECT NAME	PROJECT DESCRIPTION	PROPOSED HIERARCHY STATUS	SPORTS THAT WILL BENEFIT	PROPOSED PRIORITY High = 1-3 years Medium = 4-10 years Low = 11-20 years
<b>Canterbury Sports Limited</b>	Proposed further developments at Yaldhurst site that would incorporate:			Requires further detail for assessment
	50m Pool	To be determined	Swimming, Water Polo	Low
	Diving Pool	To be determined	Diving	Low
	Small - spectator stadium (1,000 Pax)	To be determined	Football	Low / Medium
	Indoor Sports Courts	To be determined	Netball, Basketball, Volleyball, Badminton, Table Tennis, Futsal	High
	Gymnastic Facility	To be determined	Gymnastics	Medium
<b>Development of Ōtākaro Avon River Corridor Regeneration Area</b>	<p>Regeneration of the Ōtākaro Avon River Corridor. 602 hectares of land that may include a mix of recreation and sport opportunities</p> <p>Ten options have been presented to the community for feedback. Some potential options are considered to meet the threshold for an assessment on the priority from a sporting perspective, such as a flat-water facility, a white-water facility, golf course, marathon course, criterion cycling, space for large scale extreme sports competitions or events</p>	To be determined	Some sports that may benefit include: Canoe/ Kayak, Waka Ama, Dragon Boating, Rowing, Yachting, Multisport/Triathlon, Swimming, Long Distance Running, Road Cycling, White Water Rafting, Extreme Sports	The options and individual proposed facilities will require further assessment but options that enhance and maximise the opportunity to meet the identified sport and recreation needs would be considered a high priority.

The identification and prioritisation of projects is a high level strategic view and does not replace further, specific project analysis as projects move to feasibility and business case stages. Rather, it provides an awareness that these projects need to be considered for further discussion.

The current and future sporting membership and participation rates have been considered alongside demographic projections to understand the likely rates of participation. Participation rates have slowly returned to being at a similar level as pre-earthquake levels. The population is due to increase by approximately 96,000 by 2038, with the majority of the growth (77,000) coming in the 65 years and over category.

## Next steps

The region's councils should continue to collaborate to undertake further across boundary planning to determine what role (if any) these projects could play in the region's future facility network.

A range of projects are also being planned or proposed by non-Council project leaders. This highlights the complexity of this multi-stakeholder sector and the need for a coordinated approach to ensure an efficient network is developed. Councils' have an opportunity to work with these partners to understand their needs in greater detail. In times of rapid redevelopment, it is very easy for good planning and business analysis to be bypassed.

The operational sustainability of the network needs to be carefully considered as raising development funding is only one aspect that requires consideration. This underscores the need for further planning and determination of those priority projects that will have the most impact on community sport participation

This plan has been developed by the partner organisations as a Regional approach to identifying and agreeing facility priorities. The Plan will however require an effective mechanism for enacting these priorities and to host ongoing discussions. At a Regional level, there are a number of existing forums, groups and committees such as the Greater Christchurch Partnership and Mayoral Forum as well as existing plans (e.g. UDS) already in place that would serve this purpose.

At a TLA level the agreed priorities can be realised through consideration at the Council table and existing planning processes (e.g. Long Term Plans, Annual Plans and relevant Sport and Recreation planning documents).

There are clear and obvious benefits to an ongoing, collaborative approach to sports facility planning.

Sport Canterbury will continue to provide leadership and coordination as this plan enters the implementation phase including:

1. Continue to advocate for the use of this Plan to guide decision making
2. Identify and agree the responsibilities of each partner in the delivery of the plan.
3. Work with sporting stakeholders to increase the sector's understanding of the LTP process
4. Work with sports to further understand their own specific facility needs
5. Provide ongoing support during implementation

## Recommendations

It is recommended that:

1. Canterbury Councils continue to take a regional view and approach to sports facility planning.
2. All proposed facilities identified in this Plan are rigorously tested and analysed to confirm the role they play in the region's sporting facilities network.
3. Councils Investigate a funding mechanism that supports regional investment into international, national and regional level facilities.
4. Those sport facilities that are identified as being Sub-regional are also considered to ensure the network approach to sports facility planning is optimised.
5. Councils continue to work with and support Sport Canterbury in its role of engaging with sporting codes to encourage the sharing of information and data relating to sports participation and facility planning.

# Contents

---

Executive Summary	3
1.0 Introduction	9
2.0 Strategic Alignment with Wider Planning	12
3.0 Our Challenges	15
4.0 Demographic and Participation Data	17
5.0 Key Principles	24
6.0 Facility Project Evaluation / Decision Criteria	25
7.0 Sports Code Feedback	28
8.0 Planned and Proposed Projects	29
9.0 Sub-Regional Projects	33
10.0 Conclusions & Recommendations	34
Appendix One: Draft Regional Facilities Network	37
Appendix Two: Sport Facility Descriptions	41
Appendix Three: Review of Relevant Sports Code Facility Plans	49
Appendix Four: Sporting Code Survey Returns	55

# 1.0 Introduction

---

## Report Purpose

The purpose of this update on sports facility needs is to provide a preliminary assessment of the current and planned sporting facilities network. It reflects on the Spaces, Place and People Plan for Sport and Recreation in Greater Christchurch completed in February 2013 and now encompasses a wider area defined by the territorial boundaries of Ashburton District Council, Selwyn District Council, Christchurch City Council, Waimakariri District Council and Hurunui District Council<sup>3</sup>.

This plan, along with similar ones being developed in South Canterbury and the West Coast will form part of an overall Canterbury and West Coast Sports Facilities Plan all of which make up the geographical region for Sport Canterbury.

This plan can be seen as an update on the Greater Christchurch Spaces, Places and People Plan (2013) and is intended as a high-level assessment of current and future sporting facility needs. This will provide guidance to inform key decision makers in their own planning processes and provides a framework for a coordinated approach across territorial authorities.

## Using this Report

This report has been developed to assist any individual or organisation involved in the planning, delivery and operation of sporting facilities.

The report considers available high-level demographic and sports participation projection data and its impact on the future sporting facilities network. The report can primarily be used to understand cross boundary sporting facility provision and identify potential opportunities for future collaborative projects.

This report has been developed to assist decision makers within territorial authorities and partner organisations in identifying priority projects that should be considered. Territorial authorities are currently working toward new Long Term Plans (LTPs) for the 2018-2028 period and there is an opportunity for the identified projects to be inserted within these LTPs.

## Methodology

In the short timeframe available to prepare this report it has meant that much of the assessment has involved confirming the existing understanding of what sporting facilities exist, are currently being developed or are planned for. Also included is an identification of those other known proposed projects at the time of the update being prepared and it has drawn from previous planning documents within Canterbury (and nationally). Consideration has also been given to identifying the commonalities within previous documents and considered the current environment that Canterbury is operating within.

A review of sports code national and regional facility planning and strategies (where they exist) has been included as appendix two.

A preliminary assessment of all known or proposed projects (of a regional significance or greater) has been undertaken by the project steering group, using a set of agreed criteria.

<sup>3</sup> For the sake of simplicity this area is called Canterbury, acknowledging that the Canterbury province includes other territorial authority areas and therefore generally covers a wider region. Sport Canterbury is working with the Timaru, Waimate and MacKenzie District Councils to develop a South Canterbury Spaces and Places Plan.

## Limitations

The update represents an interim or preliminary document and as such, as further information and project opportunities come to hand the picture outlined in the document will undoubtedly change. Therefore, the update is a “snap-shot” at this point in the development and provision of community sport facilities.

High level participation and demographic data has been provided using existing data sources. No extensive primary research has been undertaken. Further analysis of the secondary data gathered is recommended in the next stage of the process to provide additional layers of detail.

The restricted timeframe given to complete the report has limited the amount of contact possible with the relevant sports codes. Thirty-one codes were approached to confirm the information that was on hand. While there were a large number that confirmed and/or added to the information, there were some sports that did not respond. As more information comes to hand it is expected that this plan can continue to be updated accordingly.

The identification and prioritisation of projects within this document does not replace further, specific project analysis as projects move to feasibility and business case stages.

## A Unified Leadership

This Plan was requested by the Greater Christchurch Partnership Committee. The Final Draft of this Plan was presented to this Group in November 2017 with the following unanimously agreed resolutions. That the Greater Christchurch Partnership Committee:

1. Receive the presentation and draft Canterbury Spaces and Places Plan.
2. Request that Councils and other Partners use the draft Plan as part of deliberations regarding Long Term Plans and other strategic and regeneration planning.
3. Note that the draft Plan will be circulated to the sports sector for comment and is likely to be periodically updated as new and more detailed information becomes available.
4. Request that CEAG work with Sport Canterbury in advancing how the Plan can be advanced, including appropriate implementation and funding arrangements at a Greater Christchurch and Canterbury level.

## Scope

The scope of this report has been limited by size and impact of a sporting code and their facility requirements. The plan is focussed on significant Spaces and Places. A significant place or space is defined as serving a catchment of at least regional or district level (or equivalent size catchment of about 60,000 within Christchurch City).<sup>4</sup>

Consideration has been given to facilities that cater for wider community needs rather than just the sport specific requirements. This acknowledges that many facilities are developed to service the wider community while also offering a place for sport to undertake their training and/or competition. A good example of this are the network of public aquatic centres, which is primarily provided to service the aquatic needs of the wider community, of which competitive swimming is a sub-set.

The key indicators as to inclusion are sporting facilities that:

- Have a significant presence in Canterbury reflected by the number of residents participating in the sport or recreation activity and importance to Cantabrians reflected by the number of spectators who participate in or attend their events and,
- Require Spaces and Places where a significant capital investment is required in which to conduct sporting activity.

<sup>4</sup> This scope is the same as the Spaces, Places and People Plan for Sport and Recreation in Greater Christchurch (2013)

## Facility Hierarchy Definitions

The following general facility hierarchy definitions have been used when determining the desired network of facilities in Canterbury. A facility can fill more than one category (i.e. a facility could be categorised as an international, national and regional facility if it is used for all those functions). A hierarchy has been developed to illustrate that every facility, either existing or proposed, needs to be developed at a level that does not duplicate existing provision, unless demand dictates additional spaces:

**International:** A facility with the ability to host international competitions / events (between nations)

**National:** A facility with the ability to host inter-regional competitions (including pro and semi pro franchise competitions involving teams from outside New Zealand) and / or to serve as a national high-performance training hub for one or more sports codes.

**Regional:** A facility with the ability to host inter and intra-regional competitions and /or serves as a regional high-performance training hub for one or more sports codes.

**Sub Regional:** A facility with the ability to draw significant numbers of teams /competitors from across adjacent territorial authority boundaries for either competition or training purposes.

**Local:** A facility with the ability to service a local catchment's basic sporting needs. This catchment will predominantly be drawn from within a single territorial authority.

Note: It is assumed that venues that are categorised at a level will meet the needs of lower levels (e.g. an international standard facility can be used for national and below). The exception to this rule is where the cost of access to a higher-level facility is prohibitive.

## 2.0 Strategic Alignment With Wider Planning

---

It is important that any planning for Sports Facilities aligns with the key drivers of wider planning documents such as urban development, transport and open spaces. There are many wider planning documents that need to be considered when planning for a region-wide sports facility network.

The relevant strategies and plans considered as part of this update include:

### The Greater Christchurch Urban Development Strategy

The Urban Development Strategy provides a broad settlement pattern for Greater Christchurch over 35 years, including:

- Identifying where a variety of future homes, such as central city apartments, town houses and family-sized houses, are best located
- Providing a living environment that supports healthy communities
- Ensuring residents have easy access to shopping, health, education and community services
- Providing a range of transport choices, including public transport, cycling and walking
- Developing new and expanding existing business centres and employment areas
- Ensuring these areas are well connected to wider road and rail networks.

The Strategy “encourages Strategy Partners, communities, business, Central Government and non-government agencies to work collaboratively in managing growth to conserve or enhance precious resources and environments, while allowing growth to build vibrant and prosperous towns and suburbs that help support a growing healthy city”<sup>5</sup>.

Sporting Facilities are an important component of any community and the UDS recognises this. Section 7.3.2 of the UDS acknowledges the important role played by community facilities and notes a Sport and Recreation Recovery Programme was developed to help sport get back to business after the 2010 and 2011 earthquakes<sup>6</sup>.

### The Regional Land Transport Plan 2015-2025

The Regional Land Transport Plan (RLTP) sets the direction for the Canterbury transport system. How people can access facilities is a key determinant in participation in sport.

The RLTP outlines a series of key issues and strategies to address transport in and around Canterbury.

Access to and from sporting facilities is a key determinant in participation among communities. Any facility developments need to consider the transport network and how changes to this network can impact on future sport participation patterns.

5 [www.greaterchristchurch.org.nz/strategy](http://www.greaterchristchurch.org.nz/strategy)

6 Ibid page 36

## The Canterbury Regional Economic Development Strategy 2017-19

The Canterbury Regional Economic Development Strategy 2017-19 (CREDS) renews the commitment of the 11 local authorities in Canterbury to work together on economic and social development<sup>7</sup>.

The guiding vision is:

*A region making the most of its natural advantages to build a strong, innovative economy with resilient, connected communities and a better way of life for all.*

There are seven priority work programmes clustered around infrastructure, growing social and human capital and working with industry. To achieve this, CREDS has four key objectives for 2017-19.

1. Position our region for long-term, sustainable prosperity
2. Complete/progress earthquake recovery/rebuild in greater Christchurch and North Canterbury
3. Attract and retain businesses, capital, workers, students and visitors to our region
4. Strengthen and capitalise on interdependencies between the Christchurch and Canterbury economies.

Sport and Recreation facilities play a key role in generating economic activity within Canterbury. In a recent study, the value of sport and recreations contribution to the wider Canterbury / West Coast area was estimated at \$382.3m (or 1.3% of GDP for the area)<sup>8</sup>.

<sup>7</sup> <http://canterburymayors.org.nz/creds/>

<sup>8</sup> Sport New Zealand, 2015. The Economic Value of Sport and Recreation to the Canterbury/West Coast Region. Wellington: Sport New Zealand.

## **The Spaces, Places and People Plan for Sport and Recreation in Greater Christchurch (2013)**

This Plan was developed after the 2010/2011 Canterbury earthquake sequence to provide guidance to planners and investors in the recovery of Greater Christchurch sport and recreation facilities. The plan outlined many key strategies to recover and enhance sport and recreation facilities, including:

- Co-location – Referring to sharing of facilities, parking and human resources to achieve greater social benefits and economic efficiencies
- Hubbing – Development of significant local hubs throughout Greater Christchurch to complement the planned Metropolitan Sports Centre (and other large-scale sporting infrastructure).
- Partnerships – Increasing partnership opportunities to develop a more sustainable sporting system, including collaboration with Te Runanga O Ngai Tahu and schools, tertiary institutions and others.

The Greater Christchurch People, Places and Spaces Plan identified a series of projects to undertake over the next ten years. The following high-level review looks at what stage each project has reached.

### **Completed facility projects**

- Temporary rectangular stadium
- Repair Kaiapoi Aquatic Centre
- Develop Selwyn Aquatic Centre
- Utilise School pools for community use
- Remedy Cowles Stadium
- Restore Access to Port Hills roads and tracks
- International Cricket venue at Hagley Park
- Repair Wilding Park Tennis Centre
- Develop a BMX competition track
- 3rd Hockey Turf at Nunweek Park
- High Performance Regional Centre of Excellence at Jellie Park
- Implement a programme of sand based rectangular pitch development

### **Completed facility planning projects**

- Review CCC's Aquatic Facilities Plan (2012)

### **Projects Planned or Underway**

- Permanent rectangular stadium (now known as the Multi-Use Arena)
- Regional Aquatic Sports Centre
- New 8-10 court multi-use stadium for indoor sport
- Additional indoor courts in Rangiora and Rolleston
- All-weather Athletics track
- Christchurch School of Gymnastics Centre
- Develop existing Olympia Gym Sports Centre
- Hockey Arena with two additional turfs
- Sports house administration hub

There are a few other projects that have not been pursued due to either changing circumstances or competing priorities.

## 3.0 Our Challenges

---

The Canterbury sports facilities network faces a number of challenges which include:

### **Moving from Disaster Recovery to Future Planning**

Canterbury is working through an unprecedented recovery process. There are many gaps in the sports facility network that are currently being filled through a significant capital works programme. The challenge now turns to developing a long-term planning approach to meet the demands of sporting (and wider community) participation.

There will be a substantial demand in the numbers of staff required to run the number of facilities coming on board in the near future. It is unlikely Canterbury will have the workforce capacity to cope unless there are deepening partnerships between facility operators and training institutions.

### **Population Distribution and Changing Demographics**

While the following demographic section has highlighted the future population distribution for the Canterbury region we also need to acknowledge the significant change to the earthquakes brought. Large areas of eastern Christchurch, Kaiapoi and other smaller areas were re-classified as Red Zone land. This has forced the mass movement of thousands of Cantabrians. Population growth is most rapid in Eastern Selwyn and Eastern Waimakariri areas along with South West and Northern areas of Christchurch.

### **Maintaining Assets, Facility Sustainability and Service Levels**

Community sport and recreational assets are provided by a range of entities including, territorial authorities, charitable trusts, the Ministry of Education (via schools), and community groups and clubs. Maintaining aging assets, current service levels and facility sustainability is likely to become increasingly difficult in some geographic locations, especially for any areas with rapidly increasing, generally decreasing and / or significantly aging populations. Duplication and underutilisation of sports and recreational facilities will become increasingly unaffordable over time.

### **Changing Sport Participation Preferences**

Sports participation preferences are constantly changing. As community needs change, future sports facilities will need to be more adaptable and resilient to allow for new and changing demands, and have less of a reliance on single-activities.

## **Improving Collaborative Approaches**

Historical decision making in respect of new or replacement facilities has often been undertaken on an ad-hoc basis. Population growth in certain areas and the desire to replace or refurbish existing aging facilities (particularly in areas with an aging and/or decreasing population) will place demands on capital funding budgets. It will become increasingly important for all stakeholders to work collaboratively to improve delivery of sport and recreational facilities.

This Plan will provide an opportunity for all stakeholders to work in a collaborative and cohesive manner to address these challenges. Collaboration with our neighbours in the Canterbury region will be essential.

## **Supporting a Regional Investment Approach**

Taking a regional approach to planning for sporting facilities is gaining momentum, as evidenced by this plan. However, the challenge remains how these facilities can be funded regionally. Investment in regional facilities needs to reflect that those who benefit from these facilities come from a wider area than just the territorial authority area where the facility is located. An opportunity exists for the region's territorial authorities to explore a collaborative investment framework.

# 4.0 Demographic and Participation Data

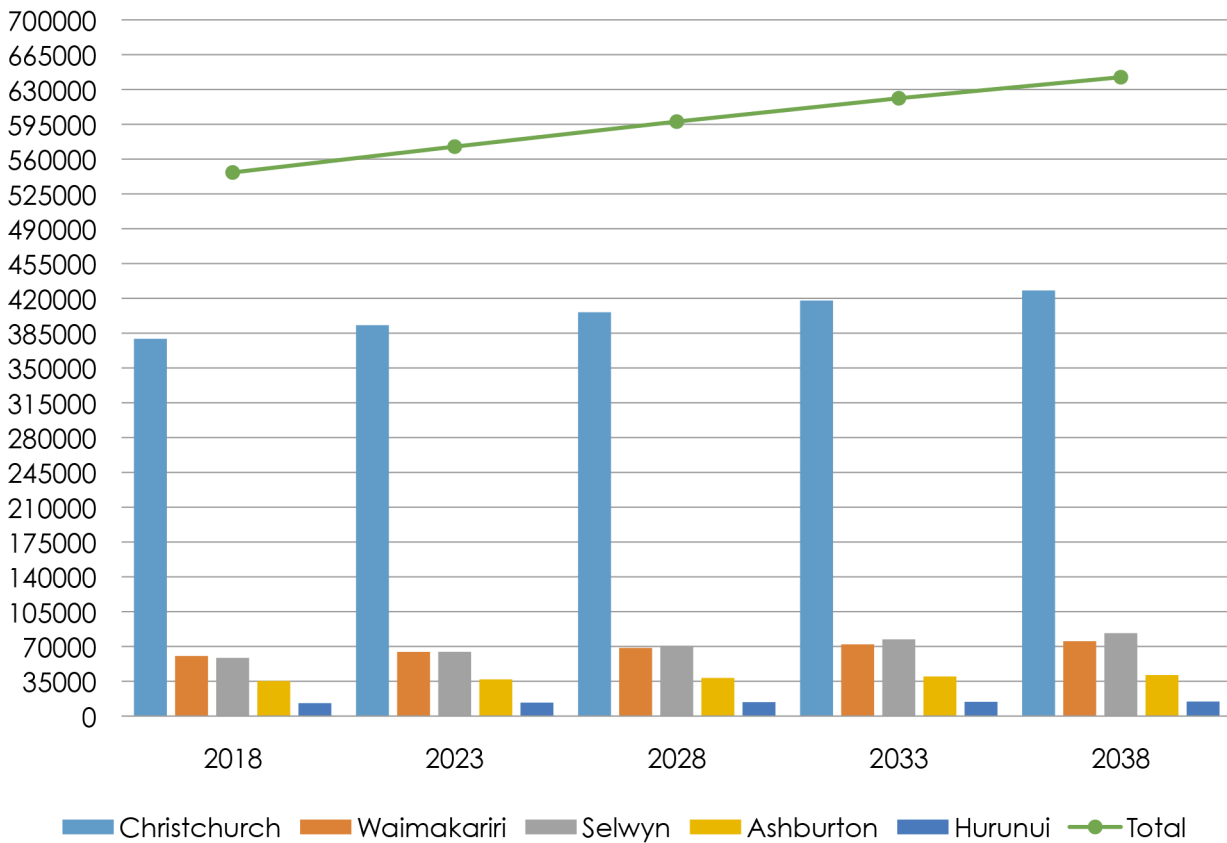
It is important that population and participation projections are taken in to account when new facilities and facility upgrades are being proposed. Population changes and shifts present challenges in ensuring that there is capacity for sports to participate in the Canterbury area.

## 4.1 Population Projections<sup>9</sup>

Population change in the Canterbury area is well documented elsewhere. The population of the study area is projected to grow from 546,569 in 2018 to 642,365 by 2038; a 17.5% increase on the current population. The most significant growth will be in Christchurch City (an increase of 48,577 (12.8%)), the Selwyn district (up 24,839 (42%)) and the Waimakariri district (up 14,839).

Chart 4.1 provides a summary of this population data.

**Chart 4.1 Population Projections for the Five Council areas**



Population forecast across all five TA areas					
Area	2018	2023	2028	2033	2038
Christchurch	379353	393035	406015	417779	427930
Waimakariri	60429	64512	68499	72111	75268
Selwyn	58511	64602	70830	77139	83350
Ashburton	35291	36880	38372	39821	41211
Hurunui	12985	13507	13986	14325	14606
<b>Total</b>	<b>546569</b>	<b>572536</b>	<b>597702</b>	<b>621175</b>	<b>642365</b>

<sup>9</sup> For the purposes of this Plan Statistics NZ mid-range projection data has been used. We are aware that some councils have customised data sets that may vary. It is recommended that the customised data is used when further planning is undertaken.

## 4.2 Population Change by Age Group

Of note is the age make-up of the population (see chart 4.2). The number of older adults in the region is projected to almost double from 2018 to 2043 (87,800 to 165,200). This increase needs to be considered when planning occurs for future facilities (or when existing facilities are being retrofitted or re-purposed). This relates not only to the types of activities that are available, but also the overall accessibility of venues for all members of the community to use.

People aged 65 years and older in the Canterbury region participate more than the national average in<sup>10</sup>:

- Golf
- Bowls (outdoor and indoor)
- Aquarobics, and
- Cycling

More specifically, the breakdown is as follows:

Young Retirees (age 65 -75 y.o.):

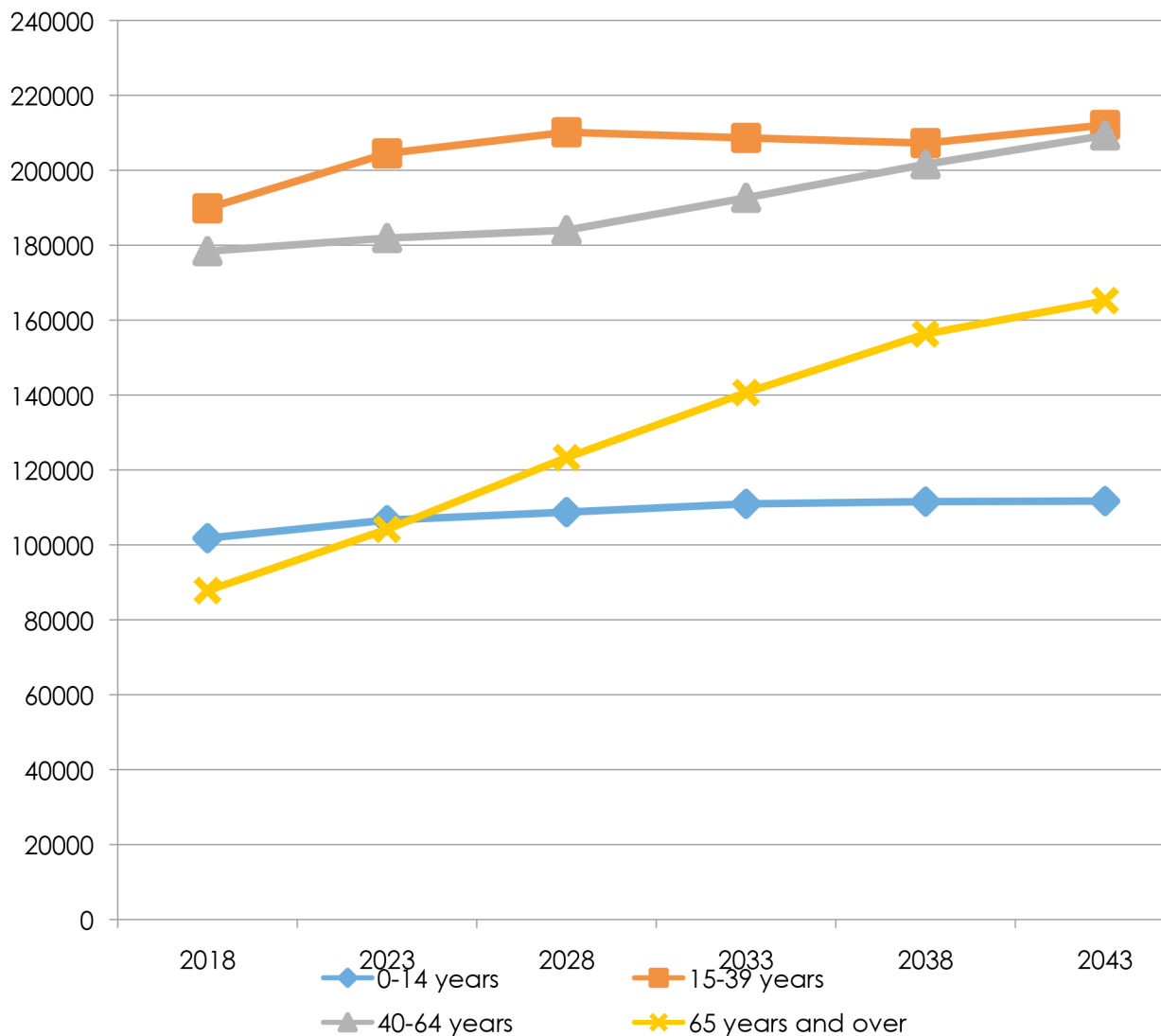
- Cycling - 27.1% (8.2% over the national average)
- Golf - 18.6% (11.1% over the national average)
- Aquarobics - 10.1% (8.2% over the national average)
- Bowls (outdoor) - 5.9% (4.0% over the national average)

Older Retirees (aged 75 years +):

- Golf - 11.1% (3.6% over the national average)
- Bowls (outdoor) - 6.8% (4.9% over the national average)
- Bowls (indoor) - 3.4% (2.6% over the national average)

<sup>10</sup> Data Sources: Statistics NZ, Sport NZ Young Persons Survey, Sport NZ insights tool and Sport NZ Active NZ Survey Series

**Chart 4.2 Age Profile: Population forecast of Canterbury area by age group**



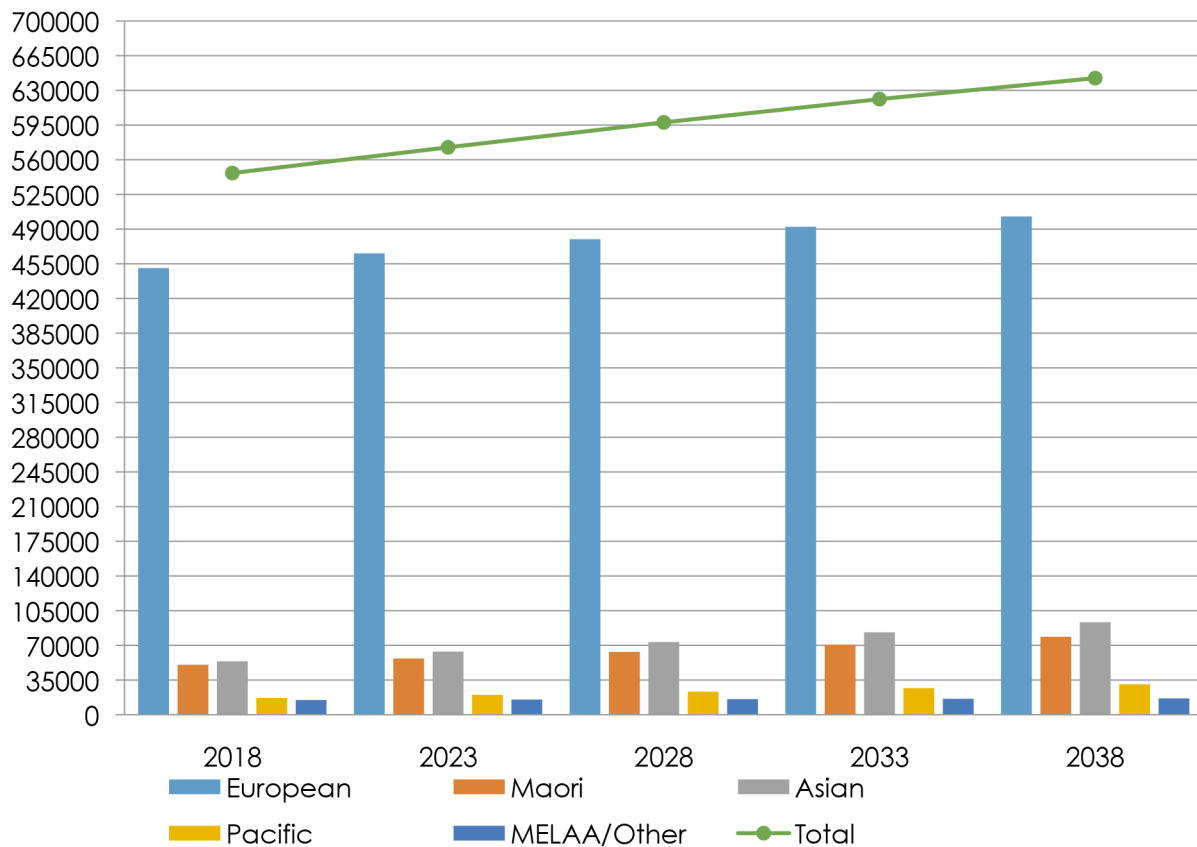
Population forecast of all five regions combined by age group							
	2018	2023	2028	2033	2038	2043	Change 2018-2043
0-14 years	101800	106600	108750	110950	111550	111700	9900
15-39 years	189850	204500	210150	208650	207250	212100	22250
40-64 years	178400	181900	184000	192650	201600	209300	30900
65 years and over	87800	104150	123300	140650	156300	165200	77400

### 4.3 Ethnicity Profile in Canterbury

Chart 4.3 highlights the projected ethnic make-up of the study area. New Zealand is becoming more diverse and Canterbury is no exception. European New Zealanders will make up 78% of the population in 2038 (compared with 82% in 2018). Significant growth is expected among Asian (14,5% in 2013 compared with 9.8% in 2018) and Maori residents (12.2% compared with 9.2% in 2018). Planning for sporting facilities needs to consider the ethnic changes in the Canterbury community. Of note, there is a predicted increase of Asian residents which could lead to changing patterns in sports participation. Asian population (not by age) sports and physical activity trends in the Canterbury/West Coast region are<sup>11</sup>:

- Cricket - 9.8% (4.6% over the national average among all ethnicities)
- Basketball - 11.5% (5.2% over the national average)
- Swimming 15.1% (1.2% over the national average)
- Badminton - 7.0% (2.6% over the national average)

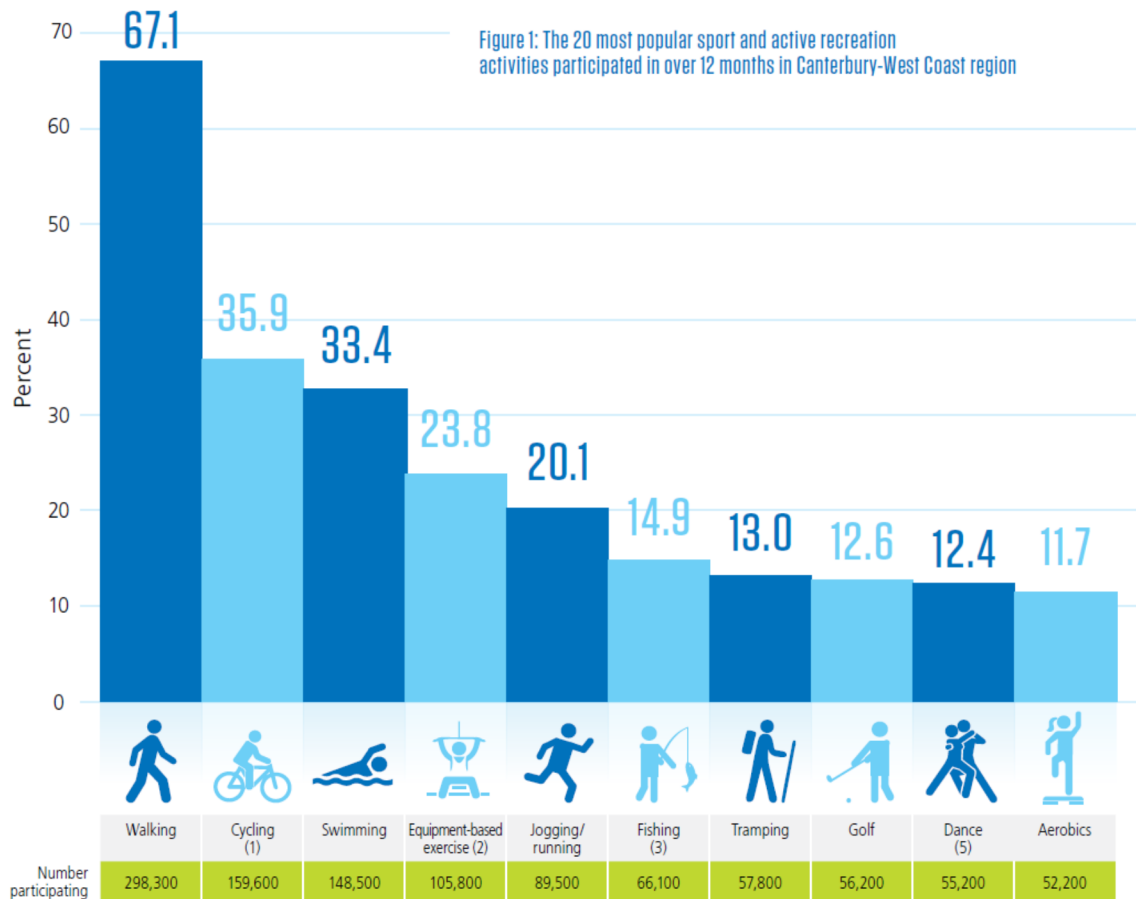
**Chart 4.3 Ethnicity Profile 2018 - 2038**



Population forecast of all five regions combined by ethnicity					
Ethnicity	2018	2033	2038	2033	2038
European	450703	465475	479797	492359	502780
Maori	50422	56712	63423	70709	78659
Asian	53880	63658	73361	83138	93278
Pacific	16898	20024	23264	26842	30686
MELAA/Other	14822	15280	15748	16115	16441
<b>Total</b>	<b>546569</b>	<b>572536</b>	<b>597702</b>	<b>621175</b>	<b>642365</b>

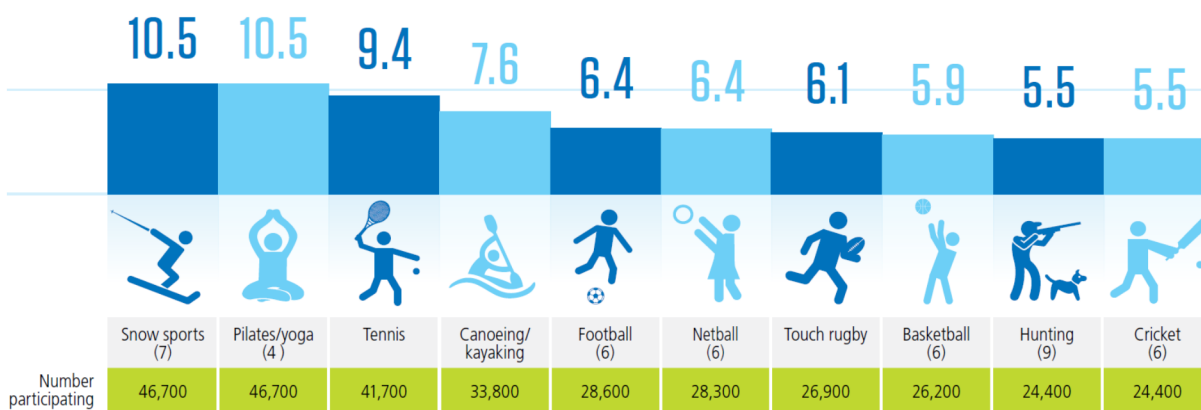
<sup>11</sup> Data Source: Young Persons Survey, Sport NZ insights tool and Sport NZ Active NZ Survey Series

## 4.4 The 20 most popular sport and active recreation activities participated in over 12 months in Canterbury-West Coast region (16 years plus) <sup>12</sup>



Notes:

- (1) Cycling includes mountain biking and cycling.
- (2) Equipment-based exercise includes the use of exercise equipment (eg, exercycles, treadmills, weights) at home or at the gym.
- (3) Fishing includes freshwater and marine fishing.
- (4) Pilates/yoga includes both at home or at the gym/class.
- (5) Dance includes several dance genres (eg, ballet, hip-hop, ballroom, modern, tap). It does not include club/rave/disco.
- (6) Includes both indoor and outdoor versions of the activity.



Notes:

- (7) Snow sports include skiing and snowboarding.
- (8) Callisthenics includes callisthenic exercise classes, exercises at home or at the gym.
- (9) Hunting includes hunting and deerstalking/pig hunting.
- (10) Other exercise does not include equipment-based exercise, pilates/yoga, aerobics or callisthenics.
- (11) Motorsports includes cars, karts and motorcycles.
- (12) Martial arts includes judo, karate, taekwondo and other martial arts.

<sup>12</sup> 2013/14 data - Active NZ Survey.

## Young People's Participation in Sports / Activities

The following table highlights the top sports/activities that young people (5-18) had taken part in at least once "this year"<sup>13</sup>. Participation could have been in any setting – at home, school or somewhere else.<sup>14</sup>

	BOYS	%	GIRLS	%
1	Swimming	78.9	Swimming	85.6
2	Running, jogging, cross-country	72.4	Running, jogging, cross-country	78.9
3	Football, soccer, futsal	71.7	Cycling, biking (not mountain biking)	73.7
4	Cycling, biking (not mountain biking)	71.5	Walking for fitness**	72.8
5	Athletics, track and field	70.8	Athletics, track and field	71.2
6	Rugby, Rippa Rugby	64.8	Gymnastics, trampoline, aerobics	58.3
7	Touch**	57.3	Dance	57.4
8	Basketball, Mini-ball	55.6	Netball	56.0
9	Tramping, bush walks	48.4	Tramping, bush walks	50.7
10	Mountain biking**	48.1	Football, soccer, futsal	48.4
11	Fishing	46.9	Basketball, Mini-ball	44.8
12	Cricket	45.3	Touch**	43.1
13	Gymnastics, trampoline, aerobics	45.3	Badminton**	37.5
14	Walking for fitness**	45.1	Canoeing, kayaking**	33.8
15	Skateboarding	41.6	Tennis, Grasshoppers	33.6
16	Rugby league**	39.1	Fishing	33.5
17	Table tennis	38.6	Māori activities	32.9
18	Badminton**	37.1	Rugby, Rippa Rugby	31.6
19	Golf**	36.6	Softball, T-ball	31.4
20	Canoeing, kayaking**	36.5	Hockey	29.5

It is important to note this is respondents recording at least "once in the year", not ongoing participation.

<sup>13</sup> Data collected based on participation over a year – published 2011.

<sup>14</sup> Sport NZ: Supplement produced for Sport Canterbury West Coast from the Young Persons Survey Regional Profile. Note: The term Grasshoppers has subsequently been replaced with Tennis Hot Shots.

The following table shows participation in sports/activities by age group.<sup>15</sup>

	5 to 10-year-olds		11 to 14-year-olds		15 to 18-year-olds	
		%		%		%
1	Swimming	89.9	Running, jogging, cross-country	82.2	Running, jogging, cross-country	79.9
2	Cycling, biking (not mountain biking)	84.4	Swimming	77.3	Swimming	74.7
3	Athletics, track and field	79.3	Athletics, track and field	66.6	Athletics, track and field	62.4
4	Gymnastics, trampoline, aerobics	69.5	Basketball	65.5	Cycling, biking (not mountain biking)	61.4
5	Cross-country	68.1	Cycling, biking (not mountain biking)	64.9	Basketball	58.5
6	Football, soccer, futsal	61.8	Football, soccer, futsal	63.9	Walking for fitness**	57.8
7	Tramping, bush walks	51.5	Walking for fitness**	57.6	Football, soccer, futsal	53.4
8	Dance	47.8	Touch**	54.2	Rugby	48.0
9	Rugby, Ripa Rugby	45.6	Rugby	53.9	Touch**	46.2
10	Fishing	41.3	Tramping, bush walks	50.9	Tramping, bush walks	44.1
11	Cricket	37.5	Netball	45.1	Table tennis	40.7
12	Skateboarding	37.2	Fishing	43.9	Badminton**	37.7
13	Māori activities	35.6	Gymnastics, trampoline, aerobics	43.4	Mountain biking**	37.0
14	Basketball, Mini-ball	34.5	Table tennis	43.1	Tennis	36.6
15	Softball, T-ball	31.3	Hockey	41.6	Dance	36.6
16	Netball	28.7	Cricket	41.5	Netball	35.1
17	Tennis, Grasshoppers	28.3	Tennis	41.2	Fishing	34.5
18	Skīing	23.7	Mountain biking**	40.8	Canoeing, kayaking**	33.9
19	Hockey	23.2	Skateboarding	37.6	Cricket	31.5
20	Table tennis	22.2	Badminton**	37.1	Volleyball, Kiwi Volley	31.3

\*\* Results are only for students who completed the Years 7 to 13 forms (mostly 11 to 18-year-olds), not all students.

## 5.0 Key Principles

---

The key principles underpinning this Plan are aligned to the Urban Development Strategy and the Sport New Zealand National Sporting Facilities Framework. These principles are used when considering the current state and proposed future network of sports facilities in the area. They illustrate how we plan to do things. They can be summarised as:

### Meeting an identified need

A clear evidence base should be developed that outlines the need for any change to the network of facilities. This need should be aligned with relevant strategies and plans (e.g. national sporting facility strategy).

### Sustainability

Our network of facilities and the individual facilities themselves need to be sustainable to maximise community benefits. To ensure sustainability, facility use needs to be optimised through proactive promotion and programming.

### Partnering and Collaboration

Working together with partners, both within and outside the Canterbury Region, to develop and operate sports facilities will become increasingly important to optimise our network and maintain its sustainability.

Councils in the Canterbury area must play to their strengths and not seek to duplicate facilities that are already or can be satisfactorily delivered in neighbouring areas. We will plan and invest in International, National and Regional level facilities as a region. This is reflective of the community we live in with services often being accessed across boundaries.

### Integration

Many sports facilities are underutilised for large periods of time. Facilities should be designed to enable integration of uses where possible both from within the sport sector and with other complementary sectors.

### Future-proofing

Sports trends and our demographics are changing. What we need from a facility today is not necessarily what we will need in the future. Given the lifespan of our sports facilities is at least fifty years it is important that they be as adaptable and functional as possible.

### Accessibility (Equity)

Given the large geographical distances covered within this plan it is important that communities have relative access to the network of sporting facilities in Canterbury. At the same time, these facilities need to be developed and operated in a way that encourages participation for all.

### Facilities that deliver Wider Benefits

Any facility development should consider the wider social, cultural and economic benefits of sport that can be gained and how these benefits can be optimised. This recognises that sport plays a significant role in the wider community. While the social and cultural benefits of sport are accepted, they are difficult to quantify. The economic benefits of sport and recreation are well documented (see page 13).<sup>16</sup>

<sup>16</sup> See: Sport New Zealand, 2015. The Economic Value of Sport and Recreation to the Canterbury/West Coast Region. Wellington: Sport New Zealand.

## 6.0 Facility Project Evaluation / Decision Criteria

The Canterbury Spaces and Places Plan has adapted a series of criteria to ensure a robust, transparent and fair process in determining the type of facility which is likely to be required and/or development priority given to different facilities. Given the Plan is a high level strategic document it is acknowledged that all proposed facility approaches will need to be tested in more detail. The criteria outlined below should be considered at all levels of evaluation.

The evaluation criteria have been developed and aligned with the key principles. It is acknowledged that some criteria can be categorised under multiple principles.

**Table 6.1 Alignment of criteria to principles**

PRINCIPLE	CRITERIA
1. Meeting an Identified Need	<ul style="list-style-type: none"> <li>The degree to which any existing or proposed facility matches the projected needs of the community within its core catchment area. In the case of facilities with wide utilisation (such as aquatics facilities) this involves consideration of all potential users from general recreational users through to organised sports codes.</li> <li>The degree to which demand exceeds supply (once all existing facilities are being run at an optimal operational level) and the facility or proposed facility can meet the identified gap.</li> <li>The ability of the facility or proposed facility to progress the competitive sporting objectives of the Canterbury region and wider New Zealand society.</li> <li>The needs identified can only be met through additional provision.</li> </ul>
2. Sustainability	<ul style="list-style-type: none"> <li>The degree to which the existing or proposed facility is operationally sustainable (taking a whole of lifecycle approach which looks at operational and maintenance costs throughout a facility's life).</li> <li>The capability of potential facility developers to develop and operate facilities.</li> </ul>
3. Partnering and Collaboration	<ul style="list-style-type: none"> <li>The potential for operational and/or capital partnerships between multiple stakeholders.</li> </ul>
4. Integration	<ul style="list-style-type: none"> <li>The degree to which a facility or proposed facility compliments / optimises the existing or proposed facility network and builds on the Canterbury region's strengths.</li> <li>The degree of alignment a facility or proposed facility has with national and regional facility strategies.</li> <li>The degree to which the duplication of facilities (from an international to a local level) is avoided.</li> </ul>
5. Future-proofing	<ul style="list-style-type: none"> <li>The ability of the facility or proposed facility to reflect international and national best practice in its location, design and subsequent operation.</li> <li>The ability of any development to enhance Canterbury as a centre of sporting excellence.</li> </ul>
6. Accessibility (Equity)	<ul style="list-style-type: none"> <li>Alignment with wider strategic documents and plans such as those concerned with urban planning, infrastructure development, events strategies and transport networks.</li> </ul>
7. Facilities that Deliver Wider Benefits	<ul style="list-style-type: none"> <li>The return on investment (capital and operational) that the facility or proposed facility can generate (measured in terms of community benefit).</li> </ul>

## Decision Making Process

There are two levels of criteria are proposed; firstly, gateway criteria that need to be achieved, before more detailed assessment would take place using the rest of the identified criteria. Each concept put forward would use the proposed facility investment decision-making process outlined below.

### Level One / Gateway Criteria

- The degree to which any existing or proposed facility matches the projected needs of the community within its core catchment area. In the case of facilities with wide utilisation (such as aquatics facilities) this involves consideration of all potential users from general recreational users through to organised sports codes.
- The degree of alignment a facility or proposed facility has with national and regional facility strategies.
- The capability of potential facility developers to develop and operate the proposed facilities.

### Level Two Criteria

- The degree to which the existing or proposed facility is operationally sustainable (taking a whole of lifecycle approach which looks and operational and maintenance costs throughout the facilities life).
- The potential for operational and/or capital partnerships between multiple stakeholders.
- The return on investment (capital and operational) that the facility or proposed facility can generate (measured in terms of community benefit).
- The ability of the facility or proposed facility to reflect international and national best practice in its location, design and subsequent operation.
- The ability of any development to enhance Canterbury as a centre of sporting excellence.
- Alignment with wider strategic documents and plans such as those concerned with urban planning, infrastructure development, events strategies and transport networks.
- The degree to which demand exceeds supply (once all existing facilities are being run at an optimal operational level) and the facility or proposed facility is capable of meeting the identified gap.
- The ability of the facility or proposed facility to progress the competitive sporting objectives of the Canterbury region and wider New Zealand society.
- The needs identified can only be met through additional provision.
- The degree to which a facility or proposed facility compliments / optimises the existing or proposed facility network and builds on the Canterbury region's strengths.
- The degree to which the duplication of facilities (from an international to a local level) is avoided.

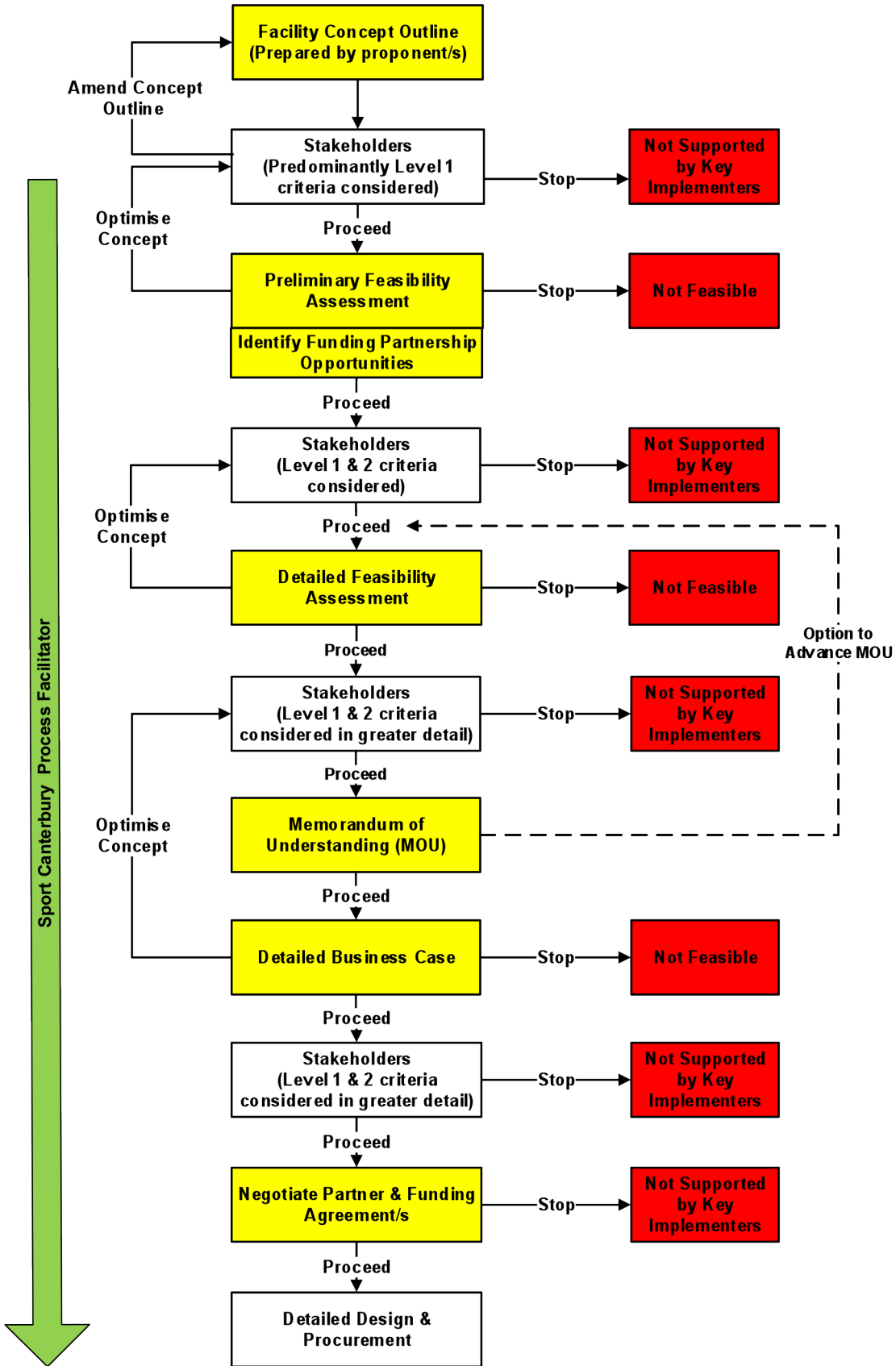
This plan has been developed by the partner organisations as a Regional approach to identifying and agreeing facility priorities. The Plan will however require an effective mechanism for enacting these priorities and to host ongoing discussions. At a Regional level, there are a number of existing forums, groups and committees such as the Greater Christchurch Partnership and Mayoral Forum as well as existing plans (e.g. UDS) already in place that would serve this purpose.

At a TLA level the agreed priorities can be realised through consideration at the Council table and existing planning processes (e.g. Long Term Plans, Annual Plans and relevant Sport and Recreation planning documents).

Chart 6.1 illustrates the decision-making process that could be followed when assessing further facility proposals. This has been adopted from other regional sport facilities plans.<sup>17</sup>

<sup>17</sup> Source: Waikato Regional Sports Facility Plan (2014)

**Chart 6.1 Decision Making Process Map**



**Note:** Stakeholders may include the likes of Local Authorities, Sport Canterbury, Community Funders, SNZ, RSO, NSO, Schools, and MOE.

## 7.0 Sports Code Feedback

---

During the development of this Plan, regional sporting organisations from a number of codes were asked for their input on their future requirements for Canterbury's network of sports facilities. At the time when the previous Spaces, Places and People Plan for Sport and Recreation was being developed, sports were reporting significant challenges as a result of the 2010/11 earthquakes. The facility network had been hard hit and participation for some sports had reduced to a level that had never been experienced before in living memory.

Sport Canterbury has been tracking participation in a number of sporting codes since 2007. This allows Canterbury the ability to assess trend information and plan accordingly. A few key facts from the most recently released Sport Canterbury Report Card are<sup>18</sup>:

- The total number of affiliated members / participants recorded by Sport Canterbury within the 25 sports surveyed in the past year totalled 138,173.
- Membership of 17 sports that have been tracked since 2010 shows a very similar current membership total (99.4% of 2010 numbers).
- This "stable" number does not illustrate the significant decline in memberships in 2011 and 2012 due to the earthquakes.
- Athletics, Bowls, Cricket, Golf, Squash, Surf Lifesaving and Tennis have seen membership decline since 2010.
- Badminton, Football, Hockey, Netball, Rowing, Rugby, Rugby League, Swimming, Touch and Water polo have seen increases in membership.

A number of sporting codes provided feedback in the data collection phase that highlighted their facility needs. Some of the emerging themes are listed here:

While new facilities are keenly awaited, the current state of some of the facilities in the network are a concern. For example, Volleyball noted poor quality playing experiences as a result of some of the facilities they identify with.

The movement of more sports to an indoor model is placing pressure on an already stressed network of indoor courts. Scheduling time for competitions and practice is difficult for many codes.

There are increased service level expectations among sports codes and this needs to be considered in future facility planning.

Many sports are changing the way they deliver their code. This seems to be driven by either shortened, modified games becoming televised (20/20 cricket, sevens rugby etc) or by the need to adapt the game to fit within the facility network that is provided (smaller sided activities on smaller fields, courts etc)

While Councils are required to take a long-term planning approach, with a ten year LTP and 30-year Infrastructure Plan, sports do not often have a view on their code requirements beyond a few years.

<sup>18</sup> Sport Canterbury Report Card 2016 (Covers the RST Boundary which includes this report's area plus South Canterbury and the West Coast).

## 8.0 Planned and Proposed Projects

---

This section outlines the projects that are currently known to be underway or proposed to commence that can be categorised within the facility hierarchy as regional or above. The section is broken down into:

- Planned projects.
- Proposed projects.

Projects that are seen as sub-regional are considered in Section 9.

### Planned Projects

The following table outlines projects that are currently committed within the community and/or are planned for within existing council Long Term Plans (2015-25). Projects will be in various stages of development from initial scoping to nearing completion and some may require further confirmation of commitment in future Long Term Plans.

**Table 8.1: Planned Projects**

PROJECT NAME	PROJECT LEADER	PROJECT DESCRIPTION	PROPOSED HIERARCHY STATUS	SPORTS THAT WILL BENEFIT
Multi-Use Arena	Christchurch CC	Business Case to determine the relative merits of a multi-use arena to cater for major events and sporting activities	International	Comprehensive range of opportunities across multiple codes, predominantly Rugby, Football, Rugby League
Metro Sports Facility	Otakaro Ltd / Christchurch CC	Development of a multi-use venue with aquatic and indoor court facilities as well as a regional high-performance training venue and sports house	International	Swimming, Diving, Water Polo Netball, Basketball, Volleyball Badminton, Table Tennis, Futsal
Nga Puna Wai Sports Park (stage one)	Christchurch CC	Multi-use sports park to cater for Athletics, Tennis, Hockey, Rugby League and other sports	International	Athletics, Hockey, Rugby League, Tennis, Touch, Rugby, Football
Christchurch Adventure Park	Christchurch Adventure Park	Reinstatement of the Christchurch Adventure Park after the Port Hills fires	International	Mountain Biking
Christchurch Squash Club	Christchurch Squash Club and Cashmere Club	Development of an eight-court facility that will attract national and international events	International	Squash
Waimakariri District Council Indoor Courts	Waimakariri DC	Development of four court multi-use venue in Rangiora to service range of sports codes	Regional	Netball, Basketball, Volleyball Badminton, Table Tennis, Futsal
Foster Park Sports Field Developments	Selwyn DC	Development of Softball diamonds to service needs of participants	Regional	Softball, Baseball Football
Kaiapoi Regeneration Area	Waimakariri DC	The development of a large area of land within Kaiapoi for various recreation and sport activities	Regional	Softball Rugby League
QEII Park Aquatic Centre	Christchurch CC	Development of sub-regional Aquatic facility	Sub-regional	Swimming
Hornby Aquatic Centre	Christchurch CC	Development of sub-regional / local Aquatic facility	Sub-regional / Local	Swimming, Diving, Water Polo
Development of multi-purpose indoor sports facility by Celebration Church	Celebration Church	Multi-purpose indoor sports facility including: 200m indoor running track High Performance (weight) training facilities 2 basketball-sized courts 'Play for pay' courts for indoor netball, cricket and football	Sub-regional	Pay-to-play Indoor sports (netball, cricket and futsal) Athletics Basketball High Performance
Badminton Facility	Private individual in partnership with Badminton Canterbury	Multi-court dedicated indoor badminton facility in Wigram.	Sub-regional	Badminton

## Proposed Projects

The following table outlines the proposed facilities where a need has been identified but are not currently planned within the community and/or council long term plans (2015-25). The following projects have been identified by the relevant sports codes and/or potential facility owner or manager. Each project has been initially assessed at a high level against the identified decision-making criteria on the available information (see section 6) to determine a level of priority compared to other sporting facility projects. They are listed in order of proposed priority.

**Table 8.2 Proposed Projects for Consideration**

PROJECT NAME	PROJECT LEADER	PROJECT DESCRIPTION	PROPOSED HIERARCHY STATUS	SPORTS THAT WILL BENEFIT	PROPOSED PRIORITY High = 1-3 years Medium = 4-10 years Low = 11-20 years
Naval Point Multi-Sport Marine Venue	Naval Point Yacht Club	Development of multi-use venue that provides access to the marine environment in an all-weather/all tide environment	Regional	Yachting, Waka Ama,	High
Foster Park Community Courts	Selwyn District Council	Proposed development of multi-court venue to service the needs of Selwyn and surrounding areas sport and community activity needs.	Regional	Netball, Basketball, Volleyball, Badminton, Table Tennis, Futsal	High
Denton Park Outdoor Velodrome	Christchurch City Council	Further work required to determine the future requirements required from Denton Oval to service cycling	Regional	Track Cycling	High
Home of Football	Mainland Football	Investigate options to meet the increasing demands on the current 'home of football' at English Park.	Regional	Football	High
National Equestrian Centre	National Equestrian Centre	Development of large indoor arena, additional covered yards and other amenity buildings at McLean's Island	Regional	Dressage, Endurance, Eventing, Para-Equestrian and Show Jumping	Medium
Nga Puna Wai Sports Park (stage two)	Christchurch City Council	Additional assets for Multi-use sports park. Stage two includes: <ul style="list-style-type: none"> <li>• 2nd athletics track</li> <li>• Spectator Seating &amp; Amenities</li> <li>• Hockey and Rugby League</li> <li>• Indoor Tennis</li> <li>• 3rd Hockey Turf</li> <li>• Admin</li> </ul>	International	Athletics, Hockey, Rugby League, Tennis, Touch, Rugby, Football	Medium
Christchurch School of Gymnastics	Christchurch School of Gymnastics	New facility to replace EQ damaged venue	Regional	Gymnastics	Medium
Olympia Gym Sports	Olympia Gym Sports Club	Upgrading venue	Regional	Gymnastics	Medium

**Table 8.2 continued**

PROJECT NAME	PROJECT LEADER	PROJECT DESCRIPTION	PROPOSED HIERARCHY STATUS	SPORTS THAT WILL BENEFIT	PROPOSED PRIORITY High = 1-3 years Medium = 4-10 years Low = 11-20 years
<b>Cuthbert's Green Artificial</b>	Canterbury Softball	Development of artificial outfield for two Softball diamond at Cuthbert's Green that could also be utilised by winter codes, in particular, football.	National	Softball, Football	Medium
<b>Indoor Community Courts Project</b>	Mainland Netball	Development of a multi-court community indoor venue for sports	To be determined	Netball, Football and potentially others	Requires further detail for assessment
<b>Canterbury Sports Limited</b>	Canterbury Sports Limited	Proposed further developments at Yaldhurst site that would incorporate:			Requires further detail for assessment
		50m Pool	To be determined	Swimming, Water Polo	Low
		Diving Pool	To be determined	Diving	Low
		Small - spectator stadium (1,000 Pax)	To be determined	Football	Low / Medium
		Indoor Sports Courts	To be determined	Netball, Basketball, Volleyball, Badminton, Table Tennis, Futsal	High
		Gymnastic Facility	To be determined	Gymnastics	Medium
<b>Development of Ōtākaro Avon River Corridor Regeneration Area</b>	Regenerate Christchurch	Regeneration of the Ōtākaro Avon River Corridor. 602 hectares of land that may include a mix of recreation and sport opportunities Ten options have been presented to the community for feedback. Some potential options are considered to meet the threshold for an assessment on the priority from a sporting perspective, such as a flat-water facility, a white-water facility, golf course, marathon course, criterion cycling, space for large scale extreme sports competitions or events	To be determined	Some sports that may benefit include: Canoe/ Kayak, Waka Ama, Dragon Boating, Rowing, Yachting, Multisport/ Triathlon, Swimming, Long Distance Running, Road Cycling, White Water Rafting, Extreme Sports	The options and individual proposed facilities will require further assessment but options that enhance and maximise the opportunity to meet the identified sport and recreation needs would be considered a high priority.

## 9.0 Sub-Regional Projects

The following table outlines other known sub-regional projects that will have an impact on the network of sports facilities in the Canterbury region. They are separated out as they will primarily service one territorial authority area with some across boundary use. These projects are not given a regional ranking, while at the same time acknowledging they may be a high priority by the proponent council. In some of the identified projects there may one or more aspects that would normally be considered to fail the threshold for consideration. However, the cumulative effect of the proposed upgrades is considered significant enough to warrant inclusion (at least until the main plan is completed following this preliminary analysis).

**Table 9.1 Sub-regional Projects**

PROJECT NAME	PROJECT LEADER	PROJECT DESCRIPTION	PROPOSED HIERARCHY STATUS	SPORTS THAT WILL BENEFIT
Selwyn Aquatic Centre Upgrade	Selwyn District Council	Proposed additional water space (LTS and Programme pools) in Rolleston	Sub-regional	Swimming
Christchurch Sports Park Network Plan	Christchurch City Council	A plan outlining the future shape and requirements for sports fields in Christchurch.	Sub-regional	Football, Rugby, Rugby League, Touch, Cricket, Softball and others
Waimakariri Sports Facility Plan	Waimakariri District Council	A strategy to determine both future sports field provision and wider sports facility needs in the Waimakariri area	Sub-regional	Football, Rugby, Rugby League, Touch, Cricket, Softball and others
Selwyn large scale park (Rolleston)	Selwyn District Council	Planning work required to determine future use of this 100-hectare open space	TBD	To be determined
Master Plan for Prebbleton Area	Selwyn District Council	Planning work required to determine future uses	TBD	To be determined
QEII Park Plan	Christchurch City Council	Planning work required to determine future uses	TBD	To be determined
Re-purpose of existing SBHS facilities	Ministry of Education	Re-purposing 2 indoor courts and artificial turf as school re-locates to QEII area?	TBD	To be determined
Rangiora / Southbrook Tennis Development	Southbrook / Rangiora Tennis Clubs	Development of new tennis courts to cater for North Canterbury	Sub-regional	Tennis
Amberley Pool	Hurunui District Council	Development of new facility that serves the southern Hurunui and some Waimakariri areas	Sub-regional	Swimming
Shirley Boys' & Avonside Girls - Hockey Turf <sup>19</sup> and Indoor Courts	Establishment BOT	Water Based Turf Two or three indoor courts	Sub-regional	Water Based hockey turf Indoor Courts

<sup>19</sup> Canterbury Hockey do not see this as a priority project

# 10.0 Conclusions & Recommendations

---

## Conclusions

This Report was requested to:

1. Describe the existing and planned sports facility network at a Regional level and above.
2. Identify projects that have been proposed for development in the near future.
3. Prioritise those proposed projects for the purpose of an agreed Regional approach to planning

The following offers some analysis on previous sections.

### A fit for purpose network

Many significant sporting facilities are being developed in the short term to complement the existing network. In general, the planned and proposed sporting facilities are aligned with wider planning documents including the relevant sporting codes national facility plans.

### High Capital Value Projects Identified

#### Aquatic Facilities

Many Aquatic venues are already confirmed for development or upgrading in the next few years. This will alleviate the pressures on pool space brought on by the earthquake related closure of QEII and Centennial pools. If all the additional proposed aquatic facilities are also developed there may be some risk of an oversupply of pool space. To confirm the need for additional water space, particularly additional competition space (e.g. additional 50m pool), an evidence based process should be followed, culminating with a thorough business case. A preliminary assessment of an additional 50m pool and diving pool considers these projects as a low priority.

#### Indoor Courts

While the full number of indoor courts has not been confirmed across the network, significant capacity is planned to be added in the next few years. The Metropolitan Sports Facility, Waimakariri and Selwyn area facilities, plus the soon-to-be-completed Celebration Centre Facility will add significant capacity to the network. Commitment to any additional indoor court facilities should only be made following a thorough feasibility study and business case.

New purpose-built Badminton courts are being developed in Wigram which will provide a major increase in the network for badminton.

#### Multi-purpose Arena

Investigations into a large-scale, multi-purpose arena should continue. Ongoing consultation with impacted sporting codes is a critical part of ensuring this facility's success (as it is with any proposed development).

## **Open and Flat-Water Access**

Plans are being developed to provide more access for marine sports to access Lyttelton Harbour at Naval Point. Canterbury has limited access to the ocean that is not tide dependent. This proposal opens further opportunities for a wide range of marine based sports in Canterbury.

It is also noted that ongoing planning work is occurring to assess the feasibility of a flatwater facility in the Ōtākaro Avon River Corridor Regeneration Area by Regenerate Christchurch, and this has led to the recent publication of a Technical Feasibility Study and Indicative Business Case . Earlier studies have indicated that there is a need for more water space to support community level participation.

## **Sports Fields**

The sports field planning underway in Christchurch and Waimakariri will assist in identifying future provision of the network of sports fields, including possible new developments (that may include artificial turfs or high specification grass fields). For example, it has been reported that English Park is sub-optimal as a regional “Home of Football” and a new venue needs to be found that allows multiple pitches.

## **Track Cycling**

Feedback during the development of this Plan suggests that the future of the Denton Oval velodrome will need to be addressed in the short to medium term.

## **Continuing a Regional Approach**

There are also a series of other large-scale projects being proposed. The region’s councils should collaborate to undertake further cross-boundary planning to determine what role (if any) these projects could play in the region’s future facility network.

A wide range of projects are also being planned or proposed by non-Council project leaders. This highlights the complexity of this multi-stakeholder sector and the need for a coordinated approach to ensure an efficient network is developed. Councils’ have an opportunity to work with these partners to understand their needs in greater detail. In times of rapid redevelopment, it is very easy for good planning and business analysis to be bypassed.

The operational sustainability of the network needs to be carefully considered as raising development funding is only one aspect that requires consideration. This underscores the need for further planning and analysis.

There is a clear and obvious need for an ongoing collaborative approach to sports facility planning.

## **Explore a Regional Funding Mechanism**

An opportunity exists for the region’s territorial authorities to explore a collaborative investment framework. This would further encourage cross-Council sport facility planning and development and ensure those facilities that benefit a wider.

## **Coping with Growth**

Consideration must also be given to the workforce requirements of the region. As a considerable number of new facilities are being added to the network the demands for personnel to staff, manage and maintain the region’s network of sporting assets will grow significantly.

## Recommendations

It is recommended that

1. Canterbury Councils continue to take a regional view and approach to sports facility planning.
2. All proposed facilities identified in this Plan are rigorously tested and analysed to confirm the role they play in the region's sporting facilities network.
3. Councils Investigate a funding mechanism that supports regional investment into international, national and regional level facilities.
4. Those sport facilities that are identified as being Sub-regional are also considered to ensure the network approach to sports facility planning is optimised.
5. Councils continue to work with and support Sport Canterbury in its role of engaging with sporting codes to encourage the sharing of information and data relating to sports participation and facility planning.

## Appendix One: Draft Regional Facilities Network

---

The following table outlines a draft inventory of International, National and Regional Facilities within the Ashburton, Hurunui, Selwyn, Waimakariri and Christchurch Council areas. Existing facilities are in normal type, planned facilities are in **bold** and proposed facilities are underlined.

Sub-regional and local venues have been identified where the value of those types of assets are individually or collectively “significant” and the consideration of a network approach is an important part of meeting the demand from participants.

The purpose of this table is to understand the current (and planned network) and then determine whether the network requires additional assets (considering the 30-year time frame). This table is set out sport by sport and it is acknowledged that some facilities can service various sports. However, for planning purposes only those sports who would use those facilities regularly have been identified.<sup>21</sup> It is acknowledged that a facility will meet subsequent lower levels of the facility hierarchy (i.e. a facility classified as being of international standard will meet the requirements of national, regional and below levels).

<sup>21</sup> An example of this is that the Metropolitan Sports Facility has been designed to cater for a number of sports on a one-off basis (e.g. a Tennis event), but it is not expected that these sports will regularly access the facility for community use.

## Table A1 - The Sporting Facilities Network

(A description of named facilities is beneath this table)

SPORT/S	INTERNATIONAL	NATIONAL	REGIONAL	SUB-REGIONAL
Air Sports				Rangiora Aerodrome
Archery			Foster Park	Rawhiti Domain Osbourne Park (Doyleston)
Athletics	Nga Puna Wai Nga Puna Wai (2nd track)			
Badminton	Badminton Facility - Wigram	Badminton Hall - Pages Rd	Canterbury Sports Limited	Lincoln Events Centre Foster Park
Basketball	Horncastle Arena Metro Sports Facility	Cowles Stadium	EA Network Centre Lincoln Events Centre Pioneer Foster Park Waimakariri DC Canterbury Sport Limited	Graham Condon YMCA Bishopdale Celebration Centre QEII
Baseball			Foster Park	Avonhead Park
Bowls	Burnside Bowls Papanui Canterbury Centre Green Fendalton	Beckenham Belfast Elmwood Park Halswell Parklands Papanui Club Morrison Ave Riccarton Racecourse	Parklands Elmwood Park Canterbury 2017 Club	
Canoe / Kayak	Ótākaro Avon River Corridor (TBD)		Lake Hood	Kerrs Reach
Cricket	Hagley Oval	Lincoln University Mainpower Oval	Hagley Park Mandeville Domain	
Cycling (BMX)		Bexley Kyle Park	Rangiora	Amberley
Cycling (MTB)	Christchurch Adventure Park		Mount Hutt Bike Park	
Cycling (Track)			Denton Oval Tinwald Velodrome	
Equestrian		National Equestrian Centre (McLean's Island)	Mandeville Domain	
Football	AMI Temp Stadium Multi Use Arena	English Park	Christchurch Football Centre Canterbury Sport Limited	Foster Park Kendall Park
Futsal	Metro Sports Facility		EA Networks Centre Foster Park Waimakariri DC Canterbury Sport Limited	

SPORT/S	INTERNATIONAL	NATIONAL	REGIONAL	SUB-REGIONAL
Golf	Clearwater Pegasus	Russley Shirley		
Gymnastics	Horncastle Arena Metro Sports Facility		Christchurch School of Gymnastics Olympia	ICE Trampoline Christchurch School of Gymnastics - Impact Alpha Site
Hockey	Marist Park & Waimakariri (temp infrastructure) Nga Puna Wai	Nunweek Park		Shirley Boys High School / Avonside Girls High School Hockey Turf
Ice Sports		Alpine Arena		
Motorsports	Ruapuna			
Netball	Horncastle Metro Sports Facility	EA Networks Centre	Hagley Park <sup>22</sup> Lincoln Dudley Foster Park Canterbury Sport Limited	
Rowing	Ótákaro Avon River Corridor (TBD)		Lake Hood	Kerrs Reach Lower Waimakariri River Lower Selwyn River Kaiapoi River
Rugby	AMI Temp Stadium Multi Use Arena	Rugby Park Ashburton		Denton Park Linfield Park Lincoln University
Rugby League	Nga Puna Wai AMI Temp Stadium		Ashburton	
Shooting		McLeans Island		
Softball	Smokefree Ballpark (Cuthbert's Green)			Papanui Foster Park Waimakariri
Squash	Christchurch Squash Club			
Surf Lifesaving			South New Brighton North New Brighton Taylors Mistake Waikuku Beach	
Swimming (including Synchronised Swimming and Diving)	Metro Sports Facility		EA Network Centre Jellie Park Selwyn Aquatic Centre Selwyn Aquatic Centre expansion Canterbury Sport Limited	Dudley QEII Hornby

<sup>22</sup> According to NNZ venue specification guidelines, some levels of regional competitions and events can be staged at these outdoor venues, although it is recognised they cannot cater for the more significant inter-regional competitions that require indoor venues

SPORT/S	INTERNATIONAL	NATIONAL	REGIONAL	SUB-REGIONAL
Table Tennis		Blenheim Road		Foster Park
Tennis	Wilding Park Nga Puna Wai		Ashburton Nga Puna Wai Rangiora/Southbrook proposal	
Touch		Hagley Park Burnside Park		
Volleyball	Metro Sports Facility	Pioneer EA Networks	Cowles Waimakariri DC Canterbury Sport Limited	YMCA Bishopdale Foster Park
Water Polo	Metro Sports Facility	Jellie Park EA Networks	Canterbury Sport Limited	Pioneer
Yachting	Ótákaro Avon River Corridor (TBD) <sup>23</sup>		Naval Point Mount Pleasant / Scott Park Naval Point Te Ana Marina	Lower Waimakariri River

<sup>23</sup> Ross May – President of Canterbury Yachting Association (email 11/08/17) “Since 2013 the CYA has been consulted regarding possible use of an Eastlake development. The Association has identified some Learn to Sail/Safety and specific National and International event potential but expects most sailing activity to be club based.”

## Appendix Two: Sport Facility Descriptions

**Table A2 – Glossary of Facilities**

FACILITY	DESCRIPTION
Alpine Arena Ice Sports	Indoor ice rink to accommodate figure skating, speed skating and ice hockey as well as community use. Brougham Street, Christchurch.
Amberley BMX Track	Entry level competition BMX track. Amberley Domain.
AMI Temp Stadium	International level natural grass stadium to accommodate 'big ball' sports (rugby, rugby league, football) and concerts and events. Seating for around 18,000. Jack Hinton Drive, Christchurch.
ASB English Park	Single artificial FIFA accredited football turf, seating for around 500. Home of Mainland Football. Cranford Street, Christchurch.
Ashburton A & P Showgrounds	Home of Mid-Canterbury Rugby Union. Multiple full-sized turf fields for training and competition. Brucefield Ave, Ashburton.
Ashburton Trust Tennis Centre	16 plexipave, floodlit, competition level tennis courts and pavilion. 70 Oak Grove, Ashburton
Avonhead Park (Baseball)	Club-level single-diamond baseball facility. Avonhead Park, Hawthornden Rd, Christchurch
Badminton Facility - Wigram	New purpose-built 12-court dedicated badminton facility in Wigram. Due for completion 2018.
Badminton Hall - Pages Rd	Purpose-build 8-court badminton facility. Pages Road, Christchurch
Beckenham Bowls Club	Two-green, natural grass, club bowls facility. Waimea Terrace, Beckenham, Christchurch.
Belfast Bowls Club	Single-green, natural grass, club bowls facility. Main North Rd, Belfast, Christchurch
Bexley Reserve BMX Facility	National competition level BMX Facility, Pages Road ChchPages Road, Christchurch.
Table Tennis Canterbury Stadium	Purpose-built indoor competition table tennis stadium. Blenheim Road
Bowls Papanui	Two-green, natural grass, club bowls facility.
Burnside Bowls Club	Three-green, natural grass, club bowls facility.
Canterbury 2017 Club	Proposed combined bowling club partnership between St Albans Park and Canterbury Bowling Clubs.
Canterbury Centre Bowling Green	Single-green, natural grass bowling facility owned by Bowls Canterbury. Makora St, Christchurch.
Canterbury Sports Limited	Proposed private multi-sport development including: <ul style="list-style-type: none"> <li>• 50m swimming pool</li> <li>• indoor sports courts</li> <li>• gymnastics facility</li> <li>• X,000 seat football stadium</li> </ul> Yaldhurst Road, Christchurch.
Celebration Centre	Privately owned multi-sport facility including: <ul style="list-style-type: none"> <li>• Two indoor Basketball Courts</li> <li>• Multi-sport indoor hall for pay-to-play futsal, indoor netball, indoor cricket.</li> <li>• 200m indoor athletics track</li> </ul> Pages Road, Christchurch

FACILITY	DESCRIPTION
<b>Christchurch Adventure Park</b>	Downhill mountain bike and adventure park Worsleys Road, Christchurch
<b>Christchurch Football Centre</b>	Privately-owned purpose-built outdoor football training, competition and performance facility. Two full-sized artificial football fields
<b>Christchurch School of Gymnastics</b>	1. Existing two-floor facility for trampoline and artistic gymnastics. 2. New facility to replace existing at new site on same park.
<b>Christchurch School of Gymnastics – Impact Alpha Site</b>	Single floor community gymnastics facility.
<b>Christchurch Squash Club - Cashmere Development</b>	New 8-court squash facility co-located with the Cashmere Club.
<b>Clearwater Golf Course</b>	18-hole International Golf Course
<b>Cowles Stadium</b>	Multi-purpose indoor stadium. Two full-size sprung wooden basketball courts also capable of accommodating netball, volleyball, badminton. 500 permanent seats Capable of accommodating 2300
<b>Denton Oval Cycling Facility</b>	400m outdoor concrete track cycling facility. Small covered stand for spectators Associated admin, competitor and spectator facilities.
<b>Denton Park Rugby Ground</b>	Grass rugby ground inside the cycling track. Small covered stand for spectators. Associated admin, competitor and spectator facilities.
<b>Dudley Park Netball Courts</b>	North Canterbury Regional Netball Centre. Outdoor, X-court, hard court netball facility. Church Street, Rangiora
<b>Dudley Park Aquatic Centre</b>	Indoor Aquatic Centre incorporating: <ul style="list-style-type: none"> <li>• 25m 8-lane pool</li> <li>• learn to swim pool</li> <li>• leisure pool.</li> </ul> Church Street, Rangiora

FACILITY	DESCRIPTION
<b>EA Network Centre</b>	Multi-sport indoor and outdoor sports centre incorporating: <ul style="list-style-type: none"> <li>• 4 indoor courts catering to Netball, Basketball, Futsal, Volleyball, Tennis, Badminton.</li> <li>• 2 outdoor sports courts</li> <li>• Sports House</li> <li>• Gym and Fitness Centre</li> <li>• Café</li> <li>• Community meeting rooms</li> <li>• Main pool: 25m x 25m and 1.1m to 1.8m deep, 27.5°C (10 lanes)</li> <li>• Hydrotherapy Pool, 20m x 12m and 1.1m x 1.8m deep.</li> <li>• Leisure Pool with wet deck and lazy/rapid river.</li> <li>• Learn to Swim Pool.</li> <li>• Toddlers Pool.</li> <li>• Steam room and Spa.</li> </ul>
<b>Ótákaro Avon River Corridor (TBD)</b>	Proposed developments in the Ótákaro Avon River corridor to accommodate multiple sports activities and community access. Some shortlisted options have identified a potential flat-water venue for a range of sports.
<b>Elmwood Park Bowls Facility</b>	Proposed indoor bowls green at Elmwood Park
<b>Fendalton Bowls Club</b>	Two-green, natural grass, club bowls facility.
<b>Foster Park Indoor Sports Facility</b>	Multi-court indoor sports facility. Foster Recreation Park, Goulds Road, Rolleston
<b>Foster Park Baseball Facility</b>	Proposed Baseball Facility combined with Softball. Foster Recreation Park, Goulds Road, Rolleston
<b>Foster Park Softball Facility</b>	Proposed Softball Facility combined with Baseball. Foster Recreation Park, Goulds Road, Rolleston
<b>Graham Condon Recreation and Sport Centre</b>	Multi-sport Recreation Centre including: <ul style="list-style-type: none"> <li>• Single indoor hard court.</li> <li>• 25m x 8 lane competition pool</li> <li>• Learn to swim pool</li> <li>• Paddling pool</li> <li>• Spa</li> <li>• Sauna.</li> <li>• Weight training gym.</li> </ul> Sisson Drive, Christchurch
<b>Hagley Oval</b>	International specification test and one-day cricket oval. <ul style="list-style-type: none"> <li>• Pavilion with capacity for 500.</li> <li>• Total capacity 20,000.</li> </ul> Riccarton Ave, Christchurch
<b>Hagley Park</b>	Outdoor multi-sport grounds and facilities including outdoor netball courts, cricket pitches, rugby, football, touch, softball grounds.
<b>Halswell Bowls Club</b>	Two-green bowling club – 1 synthetic and one natural. Halswell Road, Christchurch
<b>Hornby Aquatic Centre</b>	Proposed Aquatic centre for Hornby.
<b>Horncastle Arena</b>	Large indoor events arena for sport as well as commercial and entertainment events. Seats up to 8800 at full capacity. Jack Hinton Drive, Christchurch

FACILITY	DESCRIPTION
ICE Trampolining	Dedicated Trampoline Club. Edward Street, Rangiora
Jellie Park Recreation and Sport Centre	50m 8-lane outdoor pool Outdoor dive well 2x25m training and competition pools Weights gym Fitness studio Leisure slides Ilam Road, Christchurch
Kaiapoi River	Natural watercourse with facilities for rowing clubs including storage sheds and launch ramps. Raven Quay, Kaiapoi.
Kendall Park	Synthetic, full-sized, all-weather sports facility built to IRB and FIFA standards. Island Road, Rangiora
Kerrs Reach	Natural watercourse with facilities for rowing clubs including storage sheds and launch ramps. Kerrs Road, Christchurch
Kyle Park BMX Facility	National competition level BMX facility, Waterloo Road Chch
Lake Hood	Man-made recreational lake for powered and non-powered water sports. Can accommodate an international 8-lane rowing course. Includes launch ramps, Café and function centre. Located 6 km south-east of Tinwald in Canterbury,
Lincoln Events Centre	Single-court wooden floor sports hall. Associated halls, lounges and function rooms Meijer Dr, Halswell, Lincoln
Selwyn Netball Centre	11-court outdoor Netball centre
Burt Sutcliffe Oval	First-class natural grass cricket oval and pavilion. Lincoln University, Lincoln.
Linfield Park	Natural sand-based grass rugby field and clubrooms. Kearneys Road, Christchurch
Lower Selwyn River	Natural watercourse used for rowing training. Lake Ellesmere, Canterbury.
Lower Waimakariri River	Natural watercourse used for rowing training. Includes launch ramp and club boat storage facilities. Riverlea Estate Drive, Christchurch
Lyttelton Marine access project	A plan for the development of the Naval Point marine access area in Lyttelton.
Mainpower Oval	First class cricket oval. Pavilion and lounge and embankment for spectators.
Mandeville Domain (Equestrian & Cricket)	Home to the Eyreton Pony Club and Western Riding Club. Includes a sizable jumping area and small arena spaces for rider training and club events. The Western Riding Club uses an all-weather arena. Both have small clubrooms. There is also an on-site ring at the domain which is used for rodeo events. The playground has been renovated and opened for use in July 2016. Other facilities include: <ul style="list-style-type: none"> <li>• Playground</li> <li>• Sports fields</li> <li>• Toilets</li> <li>• Picnic friendly</li> <li>• Drone-friendly</li> </ul> Mandeville Road, Mandeville North, Canterbury
Marist Park at St Bede's Hockey Turf	Full-sized artificial hockey turf including dug-outs and small covered seating area. St Bede's College, Momorangi Crescent

FACILITY	DESCRIPTION
<b>McLeans Island Shooting Club</b>	Outdoor multi-code shooting facility.
<b>Metro Sports Facility</b>	Large aquatic and indoor recreation and leisure venue featuring: <ul style="list-style-type: none"> <li>• 50 metre, 10-lane competition swimming pool</li> <li>• separate diving pool</li> <li>• large aquatic leisure area</li> <li>• five hydroslides</li> <li>• fitness spaces</li> <li>• nine indoor courts</li> <li>• high performance centre</li> <li>• Sports House administration hub.</li> </ul> Moorhouse Ave, Christchurch
<b>Morrison Ave Bowls Club</b>	Two-green, natural grass, club bowls facility.
<b>Mount Pleasant / Scott Park Yachting Club</b>	Club Yachting Facility incorporating clubrooms, storage sheds, access ramp and set-up area. Main Road, Mt Pleasant, Christchurch
<b>Multi Use Arena</b>	A multi-purpose sports and entertainment precinct for central Christchurch. Madras Street, Christchurch
<b>National Equestrian Centre (McLean's Island)</b>	Large Equestrian Centre. One of two National Equestrian Centres in NZ. <ul style="list-style-type: none"> <li>• 104ha in total</li> <li>• 28 stables</li> <li>• 78 covered yards and 150 yards in total.</li> <li>• 5 all-weather competition arenas</li> <li>• 2 sand-surface training/warm up arenas.</li> <li>• Associated infrastructure (truck parks, ablution blocks, sheds, hall and kitchen facilities).</li> </ul> McLeans Island Road, Christchurch.
<b>Naval Point Yachting Facility</b>	Club Yachting Facility incorporating clubrooms, storage sheds, access ramp, set-up and storage areas, jetty/marina. Charlotte Jane Quay, Lyttelton
<b>Nga Puna Wai</b>	Large 32 Ha sports hub incorporating: <ul style="list-style-type: none"> <li>• Athletics Track</li> <li>• Hockey Turfs</li> <li>• Rugby League Ground</li> <li>• Tennis courts</li> <li>• Community sports fields</li> <li>• Hub administrative facility.</li> </ul> Canterbury Agricultural Park, Augustine Drive, Christchurch
<b>New Brighton Surf Lifesaving Club</b>	Surf Lifesaving Club including clubrooms, changing rooms, storage and wash down area. 186 Marine Parade, New Brighton, Christchurch
<b>Nunweek Park Hockey Facility</b>	Field Hockey Facility including: <ul style="list-style-type: none"> <li>• Three full-sized artificial hockey turfs</li> <li>• change rooms</li> <li>• Club rooms</li> <li>• Storage areas</li> <li>• Administration for Canterbury Hockey</li> <li>• Car parking</li> </ul> Woolridge Road, Christchurch
<b>Olympia Gymnastics Club</b>	Gymnastics Club for Rhythmic, Trampoline and Men's & Women's Artistic disciplines. Corner of Springs Road and Corsair Drive

FACILITY	DESCRIPTION
Papanui Bowls Club	Two-green, natural grass, club bowls facility.
Papanui Softball Club	Softball club including artificial diamond, club rooms and natural grass fields.
Parklands Bowls Club	Two-green, natural grass, club bowls facility.
Pegasus Golf Course	International 18-hole golf course. Pegasus Boulevard, Pegasus, Canterbury
Pioneer Recreation and Sport Centre	<p>Large Multi-purpose aquatic and indoor sports facility including:</p> <ul style="list-style-type: none"> <li>• 25m lane swimming pool</li> <li>• Learn to swim pool</li> <li>• Leisure pool including wave machine</li> <li>• Weights room</li> <li>• Fitness studios</li> <li>• Three-court sprung wooden floor stadium</li> <li>• Café</li> <li>• Southern Centre Multi-sensory experience area</li> </ul> <p>Lyttelton Street, Christchurch</p>
QEII Recreation and Sport Centre	<p>Large Multi-purpose aquatic and indoor sports facility (under construction) including:</p> <ul style="list-style-type: none"> <li>• Leisure pools</li> <li>• 25x25 metre lap pool</li> <li>• Learn to Swim pool</li> <li>• Lazy river</li> <li>• Water adventure playground</li> <li>• Spa pool</li> <li>• Steam room and sauna</li> <li>• Toddlers' pool</li> <li>• Hydrotherapy pool</li> <li>• Fitness centre</li> <li>• Spin room</li> <li>• Hydroslide</li> <li>• Café</li> <li>• Studio</li> <li>• Meeting room</li> </ul> <p>QEII Park, Bower Ave, Christchurch.</p>
Rangiora Aerodrome	<p>Small airfield including:</p> <ul style="list-style-type: none"> <li>• 3 grass strips</li> <li>• Fuel facilities</li> <li>• 65 privately-owned hangars</li> </ul> <p>Merton Rd, Rangiora</p>
Rangiora BMX Facility	Regional competition level BMX track, Milton Ave, Rangiora
Rangiora/Southbrook Tennis Facility proposal	<p>Combined tennis facility development.</p> <p>Rangiora, Canterbury.</p>
Riccarton Racecourse Bowls Club	Two-green club bowls facility. 1 artificial green, 1 natural green.

FACILITY	DESCRIPTION
<b>Ruapuna Motorsport Park</b>	<p>1. International motorsport facility including:</p> <ul style="list-style-type: none"> <li>• Hotmix bitumen 3.3 km track</li> <li>• Pitlane garages</li> <li>• Lounge and event control facility</li> <li>• Spectator embankments</li> </ul> <p>Hasketts Rd, Templeton, Christchurch</p> <p>2. Open-wheeled dirt track speedway including:</p> <ul style="list-style-type: none"> <li>• Spectator embankments</li> <li>• Starters facilities</li> <li>• Pit</li> <li>• Lounge and clubrooms</li> </ul> <p>Hasketts Rd, Templeton, Christchurch</p>
<b>Rugby Park</b>	<p>Private Rugby training, match and administrative venue including:</p> <ul style="list-style-type: none"> <li>• Full-size sand-based rugby field</li> <li>• Grand stand including change rooms</li> <li>• High performance centre for Canterbury Rugby</li> <li>• CRFU Rugby Administration offices</li> </ul>
<b>Russley Golf Course</b>	<p>International 18-hole golf course. Memorial Avenue, Christchurch.</p>
<b>Selwyn Aquatic Centre</b>	<p>Large Aquatic Centre with:</p> <ul style="list-style-type: none"> <li>• 25m pool with eight lanes, 1.2m to 2.1m deep and ramp access</li> <li>• Hydrotherapy pool - 1.2m to 1.8m deep, ramp access with attached spa</li> <li>• Learn to swim pool - .65m to .90m</li> <li>• Leisure pool with a lazy river and toddler's area.</li> </ul> <p>71 Broadlands Drive, Rolleston.</p>
<b>Selwyn Aquatic Centre expansion</b>	<p>TBC</p>
<b>Shirley Boys High School / Avonside Girls High school hockey turf</b>	<p>Proposed hockey turf at the new Secondary school site on QEII Park. Full details yet to be confirmed.</p>
<b>Shirley Golf Course</b>	<p>International 18-hole golf course. Horseshoe Lake Rd, Shirley, Christchurch</p>
<b>Smokefree Ballpark Softball Facility (Cuthbert's Green)</b>	<p>Large international level softball facility including:</p> <ul style="list-style-type: none"> <li>• Two international specification diamonds</li> <li>• Spectator seating</li> <li>• Lounge and administration building</li> <li>• Change rooms</li> </ul>
<b>South New Brighton Surf Lifesaving Club</b>	<p>Surf Lifesaving Club including clubrooms, changing rooms, storage and wash down area.</p>
<b>Taylor's Mistake Surf Lifesaving Club</b>	<p>Surf Lifesaving Club including clubrooms, changing rooms, storage and wash down area.</p>
<b>The Elmwood Club (TEC) Development</b>	<p>Multi-sport community sports hub development including:</p> <p>Heaton Street, Christchurch</p>
<b>Tinwald Velodrome</b>	<p>400 metre banked concrete velodrome and club rooms.</p> <p>Shearer Street, Tinwald, Canterbury</p>
<b>Waikuku Beach Surf Lifesaving Club</b>	<p>Surf Lifesaving Club including clubrooms, changing rooms, storage and wash down area. Waikuku Beach, Canterbury</p>

FACILITY	DESCRIPTION
<b>Waikuku Beach Surf Lifesaving Club</b>	Surf Lifesaving Club including clubrooms, changing rooms, storage and wash down area.
<b>Waimairi Beach Surf Lifesaving Club</b>	Surf Lifesaving Club including clubrooms, changing rooms, storage and wash down area. 1 Beach Road, Christchurch
<b>Waimakariri Hockey Turf</b>	Full-sized FIH artificial hockey surface with floodlighting. Coldstream Road, Waimakariri
<b>Waimakariri Indoor Courts</b>	Proposed indoor multi-court sports facility. Waimakariri District
<b>Waimakariri Softball Facility</b>	Proposed softball facility in Waimakariri District. Kaiapoi Regeneration Area.
<b>Wilding Park Tennis Centre</b>	Large indoor and outdoor tennis facility including: <ul style="list-style-type: none"> <li>• 6 indoor hard-surface courts</li> <li>• 18 outdoor hard surface courts</li> <li>• Administration base for Canterbury Tennis</li> <li>• Pro-shop</li> <li>• Change rooms</li> <li>• Lounge and function rooms, including commercial kitchen</li> </ul> Woodham Road, Christchurch.
<b>YMCA Bishopdale</b>	Two-court wooden floor indoor sports centre. Two glass-backed squash courts. Group fitness room. Gym (weights) room.

## Appendix Three:

# Review of Relevant Sports Code Facility Plans

---

Many major sports codes have developed National Facility Strategies of differing types. Generally, these strategies outline all or some variation on:

- the key population, capacity and demand issues affecting each code;
- their priority facility needs; and
- their recommendations for actions required to meet future facility needs.

Some of these recommendations are specific to developing particular facilities in particular regions, while other recommendations provide key guiding principles for assessing future facility needs and priorities. Some strategies have been updated over time.

### Table A3 Canterbury Region – Code-Specific Summary Points (including pre-quake strategies)

<b>Aquatic Sports (2011)</b>	<ul style="list-style-type: none"> <li>• The Canterbury portion of the wider Canterbury region (including the West Coast) has around 23 people per square metre of pool space, compared with a national average of 21 people per sqm.</li> <li>• Viewed as people per standard sized pool (8 lane, 25m), the Canterbury portion of the region has 11,441 people per pool. New Zealand has 10,518 people per pool overall.</li> <li>• The Canterbury portion of the region is likely to experience increase in swim visit demand by around 8% by 2031</li> <li>• On a ‘population-to-facility’ basis in the Canterbury portion of the region, there is a current surplus of around 4 ‘standard’ pools (8 lane 25m). By 2031 projected demand growth indicates that this surplus will still be reduced to 3 standard pools.</li> <li>• The Canterbury region does have a slightly higher than an average proportion of outdoor pools (45% vs 41% for NZ), a much higher proportion of heated pools (100% vs 77%NZ), and an average proportion of school pools (55% vs 56%NZ).</li> <li>• The Canterbury portion of the region does have a far lower than an average proportion of outdoor pools (19% vs 41% for NZ), a much higher proportion of heated pools (90% vs 77%NZ), and an average proportion of school pools (53% vs 56%NZ).</li> <li>• There is currently no suitable facility for international competition in the Canterbury region.</li> <li>• Most facility use is subsidised. Users do not pay the true cost of providing the service.</li> <li>• Ongoing replacement costs are not usually being funded.</li> <li>• Demand for competitive use/training conflicts with community use. Targeted use of service-level agreements and strategic investment support is recommended to better balance different uses at current facilities in the priority locations.</li> <li>• Allocation to competitive sports is important but is uneconomical for asset owners to subsidise competitive sports to over the 20%-40% of total usage they usually represent.</li> <li>• Better use arrangements in existing facilities may be required to meet more specific needs for competitive use; for an aging population (especially the 50+ age group); and for filling non-peak use periods.</li> </ul>
------------------------------	---

<b>Indoor Sports (2013)</b>	<ul style="list-style-type: none"> <li>• Population growth will slow and the proportion of older people increase.</li> <li>• The Canterbury portion of the wider Canterbury region (including the West Coast) is likely to experience increase in indoor sports demand by around 4% by 2031.</li> <li>• The Canterbury portion of the region has 1 council court per 36,000 people.</li> <li>• This was complemented by having 1 school court per 17,000 people in the Canterbury portion of the region. This is a lower level of provision than the average level of school court provision in New Zealand overall (all NZ is 1:14,000).</li> <li>• Around 55% of school gyms in Canterbury portion of the region were over 35 years old; (all NZ is 42%).</li> <li>• These school courts represent 65% of the indoor courts available in the Canterbury portion of the region; (all NZ is 66%).</li> <li>• The strategy adapts the Sport England facility provision calculator to estimate that on a 'population-to-facility' basis the Canterbury portion of the region is currently relatively 'undersupplied' with indoor courts overall (by 15 courts).</li> <li>• Allowing for change in future demand, the facility provision calculator estimates that the Canterbury portion region would be undersupplied by 16 courts by 2031, (based on this calculator).</li> <li>• For national level tournaments, the Canterbury region overall has no current facilities (based on earthquake losses, although developments are in planning).</li> </ul>
<b>Bike (2010)</b>	<ul style="list-style-type: none"> <li>• No specific recommendations were made for any cycling facility developments in the Canterbury region.</li> <li>• New Zealand does not require any further velodromes or BMX Supercross tracks on a population basis, although cases could be made using geographical/access issues.</li> <li>• BMX does require more regional-level facilities.</li> <li>• Mountain biking does not require any particular new facilities. Enhancing access to existing tracks is likely to be the major area of development interest.</li> <li>• TA cycling strategies may highlight some more localised cycling facility and trail needs.</li> </ul>
<b>Bowls (2013)</b>	<ul style="list-style-type: none"> <li>• Under strategy guidelines bowls venues should preferably serve a population of 18,000, a catchment of 3km and an average membership of 187. However, an exception is made for single community clubs.</li> <li>• The Canterbury portion of the Canterbury region has 64 currently active clubs, including 26 single community clubs which are excluded from rationalisation. Under these guidelines the remaining 38 club venues should be reduced to 31.</li> <li>• Bowls needs to adopt a more partnership-oriented facility use model to facilitate efficient use of resources, including the rationalisation of venues and considering involvement in shared-use venues (e.g. 'sportvilles').</li> <li>• Compared with other NZ regions, the Canterbury portion of the wider Canterbury region was among those having a relatively high proportion of play-for-play-participants (6963) relative to club member numbers (5096).</li> <li>• Canterbury was among the three recommended 'Home of Bowls' centres in Auckland, Wellington and Christchurch.</li> </ul>

<b>Netball (2011)</b>	<ul style="list-style-type: none"> <li>• Canterbury was in the Canterbury Region of Netball NZ (now part of the new Mainland Zone).</li> <li>• Growth in the 'active population' (aged 5-50) was projected to increase in Canterbury City and the Waimakariri and Selwyn Districts, with all other council areas declining.</li> <li>• The number of teams in the Canterbury region were projected to increase from 1502 in 2010 to 1523 by 2031</li> <li>• The Canterbury region had 16.0 teams for every 1000 'active' people (aged 5-50). This was lower than the average level of teams in New Zealand (17.2 teams).</li> <li>• When compared with other regions overall, the Canterbury Region only had relatively lower levels of fun-ferns (young junior).</li> <li>• The Canterbury Region overall also had 13.0 teams per court, which was around the average for New Zealand overall (13.6 teams per court). The highest level in the region was 16.9 teams per court.</li> <li>• The strategy identifies that a centre having fewer than 30 teams per court has potential spare capacity. None were seen as being close to capacity.</li> <li>• Each region should have access to at least one indoor multi-court venue (of at least 2 courts). After the Earthquake, this was not available in Christchurch.</li> </ul>
<b>Rugby League (Draft)</b>	<ul style="list-style-type: none"> <li>• Demand for Rugby League is increasing reflecting a range of trends including proactive coaching and development programmes, population growth (particularly Maori and Pacific Island) and wider ethnic diversity.</li> <li>• The Southern League Zone – including the Canterbury region - is projected to have an increase in teams from 204(2012) to 269(2021).</li> <li>• National participation is estimated to increase over the next 10 years by around 15% (for adults) and 25% (for juniors), although this is unevenly spread between and within Rugby League Zones.</li> <li>• The Southern Zone has 1 team for every 2,137 'active' people. This is well below the average level of Rugby League participation, with New Zealand overall having 1 team for every 1,496 'active' people. It has the 3rd lowest number of teams by population of any region.</li> <li>• In the Canterbury Region of the Southern Zone – growth in the 'active population' (aged 5-50) was projected to increase in Canterbury City and the Waimakariri and Selwyn Districts, with all other council areas declining.</li> <li>• The Canterbury region within the Southern Zone currently has a surplus of up to 50 hours in current weekly field capacity. Projecting to 2021, this will change to having a 50 hour per week shortfall in weekly field capacity.</li> <li>• While top level competition facilities are adequate, a national High-Performance Training Centre is required.</li> <li>• There is limited access to small scale stadiums (2,500 - 5,000) to act as premiere venues for Tier 3 and 4 National and Zone competitions.</li> <li>• A Zone-level training venue is required within each Zone.</li> <li>• It is recommended that Zones work with Council to ensure access to multisport training facilities.</li> </ul>

<b>Football (2012)</b>	<ul style="list-style-type: none"> <li>• Demand for football is increasing overall, reflecting a range of trends including population growth, increasing junior player numbers and, wider ethnic diversity.</li> <li>• The Canterbury Region is included in Mainland Football (including Tasman/Nelson/West Coast).</li> <li>• In the Canterbury portion of the Mainland Football area – growth in the ‘active population’ (aged 5-50) was projected to increase in Canterbury City and the Waimakariri and Selwyn Districts, with all other council areas declining.</li> <li>• The Mainland Football Region also has higher than average field provision per 1000 active population (0.73 fields compared with 0.56 fields for NZ overall).</li> <li>• The Canterbury region was included among those areas identified as priorities for additional fields. This was a long-term need, with 3 additional field FTEs identified as being required by 2021.</li> <li>• The Central Canterbury area (comprising Christchurch City and the Waimakariri, Selwyn and Ashburton Districts) was identified as having a weekly field capacity surplus of up to 50 hours per week, but this was projected to become a shortfall of between 100-200 hours per week by 2021.</li> <li>• Beyond this area there was insufficient data provided to estimate weekly field capacity surpluses or shortfalls.</li> <li>• More ‘Local Football Centres’ are required, although this may not require new fields.</li> <li>• Local Football Centres would ideally feature football as primary use, artificial turf(s), an all-grade training base, possible school co-location, and complementary multisport usage.</li> <li>• A dedicated central ‘Home of Football’ is required in each Football Region, providing a focus for football development; development of officials, coaches and referees; representative training and competition; year-round community football (including catch-up games; and administration.</li> <li>• Overall, developments to maximise field utilisation would take priority over providing premier grade standards.</li> <li>• New Zealand Football and the regional Football Federations to work with councils to develop enhanced field utilisation, Local Football Centres and Home of football venues.</li> </ul>
<b>Football (2016 updated)</b>	<ul style="list-style-type: none"> <li>• Projected that there has been growth in Mainland Football, however, in comparison to other Federations, Canterbury had one of the lowest growth levels overall. Projected there will be a 10.4% increase in membership patterns from the years 2013 to 2043.</li> <li>• It is projected that there will be a significant shortfall in training fields (345.7hours a week).</li> <li>• Identified that a key issue is the quality of surfaces of existing fields for competition. There is a need to develop a Christchurch based football hub, with a minimum of two flood lit artificial surfaces and higher quality pitches.</li> <li>• Mainland Football are focusing on improving access to training facilities by establishing partnerships to gain access to outdoor and indoor spaces, establishing dedicating training fields and maximizing the use of existing assets.</li> <li>• Futsal is a key focus for Mainland Football Federation with 2000 plus junior and 1500 plus youth participating in Futsal competitions. The ability to access appropriate indoor and outdoor venues is a key challenge for this Federation.</li> </ul>

<b>Hockey (2010)</b>	<ul style="list-style-type: none"> <li>• The Wider Canterbury region incorporates the Canterbury (including Christchurch), Mid-Canterbury, South Canterbury and West Coast/Buller Hockey Associations.</li> <li>• The Canterbury portion of the wider Canterbury region has a similar proportion of summer vs winter player numbers (24%) relative to the NZ average (31%).</li> <li>• The Canterbury portion of the wider Canterbury region had 3.8 turf FTEs overall, with an additional 2 in South Canterbury and 1 each in Mid Canterbury and West Coast/Buller. This totals 7.8 overall for the wider Canterbury region.</li> <li>• The sustainable number of players per turf is in the range of 600 (the minimum required to generate sufficient occupancy and turf hire fees to maintain and renew the turf without undue reliance on third party funding) to 850 (the threshold level to initiate planning and development of an additional full size FTE turf).</li> <li>• The Canterbury portion of the wider Canterbury region had the second highest ratio of players per FTE turf (1056), suggesting a considerable shortfall.</li> <li>• Both the Mid-Canterbury and South-Canterbury portions of the wider Canterbury region were identified as having a low level of winter players per FTE turf (496 and 486 respectively), suggesting lack of sustainability in both cases.</li> <li>• Based on the strategy estimates, no additional FTE turfs are required to cover any projected growth to 2030 in the Canterbury Region.</li> <li>• A key initiative is to encourage entry level hockey to be delivered locally on range of surfaces.</li> <li>• Associations and clubs should seek to use non-hockey funded surfaces for practice and for junior competition.</li> <li>• Partner with schools - (1) share cost burden (2) advocate for turfs and part turfs (hard court overlays) on school sites.</li> <li>• Supplement core hub facilities with satellite turfs to improve accessibility.</li> </ul>
<b>Hockey (2016 updated)</b>	<ul style="list-style-type: none"> <li>• Hockey in Canterbury has grown significantly, with 5,349 register hockey players, 606 in Mid Canterbury and 1,007 participants in South Canterbury.</li> <li>• There is currently one wet turf and wet dressed turf in Canterbury, one wet turf in Mid-Canterbury and one wet and wet dressed turf in South Canterbury. These turfs are all full-sized and part of a hockey association or trust.</li> <li>• In 2015, the ratio of players per turf in Canterbury was 1,337, Mid Canterbury with 606 and South Canterbury with 504.</li> <li>• It is expected that Canterbury will exceed turf utilisations by 2033 with a high player per FTE turf threshold.</li> <li>• Hockey NZ has listed Canterbury as current and future priority for community turf development, to meet projected future player demand.</li> </ul>
<b>Athletics (2010)</b>	<ul style="list-style-type: none"> <li>• The strategy recommends that each region needs only one 8-lane, synthetic, and all-weather track, of which a selected 5 regions will have IAAF Class II certification. These 5 regions did included Canterbury.</li> <li>• QE2 Stadium did provide this function but it was lost in the Earthquake.</li> <li>• The current priority recommended for the region is creation of a Class II facility, and on maintenance and sustainability any other existing athletics facilities in the Canterbury region.</li> <li>• Closer relationships with TAs were recommended (including LTCCP provisions) for maintaining 8-lane synthetic tracks.</li> </ul>

<b>Golf (2013)</b>	<ul style="list-style-type: none"> <li>• The Canterbury region was identified as a region with one of the highest population to golf facility ratios in NZ (1:12,191). Compared with other regions it had the 3rd lowest supply of courses (on a population basis).</li> <li>• 76% of Canterbury courses are 18 holes, compared with 80% for NZ.</li> <li>• The strategy identified that while the Canterbury region only has a rural population of 24%, 50% of its golf courses are in rural areas. This region has a somewhat rural-biased golf network.</li> <li>• Utilisation of golf facilities is slightly lower in the Canterbury region (10%) than NZ overall (13%), ranging from 1% to 24% at different clubs.</li> <li>• Average annual membership fees are lower (\$486) than for NZ overall (\$635). And net revenue per round was around average at \$1.59 compared with \$4.65 for New Zealand overall.</li> <li>• The strategy recommends more use of mergers and community sports hub partnerships to increase sustainability in the more rural and/or over-supplied areas.</li> <li>• A hierarchy approach means some of these could be targeted as more differentiated courses, ranging from entry-level through to advanced-level or tourist courses.</li> </ul>
<b>Cricket (2013)</b>	<ul style="list-style-type: none"> <li>• With the exception of Auckland, most regions in New Zealand do not require significant investment in additional new facilities for the participation and development levels of cricket.</li> <li>• This strategy recommended that each Cricket Association should develop a facility network plan to improve current facilities.</li> <li>• Developing more consistency in cricket facilities was a general priority, based on a link between facility quality and player development.</li> <li>• A focus was recommended on improving cricket facilities at the secondary school level, including a network-based partnership approach.</li> <li>• A focus was also recommended on developing more artificial facilities for playing and training, particularly including all semi-hard ball cricket.</li> <li>• More specific use of expert facility advisory resources was recommended.</li> </ul>

## Appendix Four: Sporting Code Survey Returns

NAME OF SPORT	BOWLS									
<b>Participation/ Membership Data</b> (source: Sport Canterbury Report Card)	2007	2008	2009	2010	2011	2012	2013	2014	2015	2016
				4555	4498	5098	4851	3800	3605	3206
<b>Participation/ Membership Trend</b> (source: Sport Canterbury Report Card)	Decreasing Membership over time. 2016 membership is at 70% of 2010 numbers.									
<b>Comments</b>	Canterbury region was among those having a relatively high proportion of play-for-play-participants (6963) relative to club membership numbers (5098) in 2012									
<b>Current Facility Network</b> This outlines the known facilities that the sport use. At this point in time we are only collecting information on facilities that are used by participants across territorial authority boundaries.	<b>STATUS</b>		<b>INTERNATIONAL</b>		<b>NATIONAL</b>			<b>REGIONAL</b>		
	Existing		Burnside* Bowls Papanui* Fendalton* Canterbury Centre Green*		Beckenham Belfast Elmwood Park Halswell Parklands Papanui Club Morrison Ave Riccarton Racecourse					
	Planned/Under Development							Parklands		
	Proposed							Elmwood Park Club Canterbury 2017 Club		
* hosted 2008 &/or 2016 World Champs Note: local facilities will be covered at a later stage.										

NAME OF SPORT	BOWLS
<p><b>Sport Facility Network</b> Do you agree with the current hierarchy of facilities? If no, please explain.</p>	<p>Every bowls club currently has a facility. The size of their facility varies. We currently have 38 clubs with one green only, 16 with two greens and 3 with three greens – see attached spreadsheet.</p> <p>The spreadsheet also indicates which clubs have artificial greens (9 in total) and or natural surfaces.</p> <p>In an ideal Bowls world; Facilities will have one or two natural surface greens and an artificial green for beginners and winter bowls.</p>
<p><b>Further Developments</b> Are there any other planned or proposed facilities not listed here that will add to the network of facilities for your sport?</p>	<ul style="list-style-type: none"> <li>• Elmwood and St Albans Merivale has recently amalgamated. They are currently still using both sites though (Heaton St and Donald Pl). However, plans to be permanently based at Elmwood Park are underway. Elmwood Park is also planning on being home to the first Lawn Bowls Indoor facility.</li> <li>• Canterbury and St Albans Park have recently amalgamated. They will be known as Canterbury 2017 and will operate out of the St Albans Park venue at Forfar St (2 green club). There have been discussions about this club supposedly moving to a site at Westminster Park and also having an Indoor facility for Lawn bowls. I like the idea of sharing facilities at Westminster Park, however there is no need for two indoor facilities in Christchurch.</li> </ul>
<p><b>Improvements</b> Are there any planned or proposed improvements to the existing facility network for your sport?</p>	<ul style="list-style-type: none"> <li>• Cashmere (2 greens) and St Martins (2 greens) are coming to speak to me tomorrow (Friday 11th August) about potential amalgamation.</li> <li>• Parkland BC are well underway with their plans to be part of the Pukeko Centre. Construction is well underway.</li> </ul>
<p>Are there any National or Regional Sports Facility Plans that are used to guide facility development for your sport? Yes/No</p>	<p>Bowls 2020 – Securing our Future: A National Facilities Strategy (2013)</p> <ol style="list-style-type: none"> <li>1. Under strategy guidelines bowls venues should preferably serve a population of 18,000, a catchment of 3km and an average membership of 187. However, an exception is made for single community clubs.</li> <li>2. The Canterbury region has 64 currently active clubs, including 26 single community clubs which are excluded from rationalisation. Under these guidelines the remaining 38 club venues should be reduced to 31.</li> <li>3. Bowls needs to adopt a more partnership-oriented facility use model to facilitate efficient use of resources, including the rationalisation of venues and considering involvement in shared-use venues (e.g. ‘sportvilles’).</li> <li>4. Canterbury was among the three recommended ‘Home of Bowls’ centres in Auckland, Wellington and Christchurch.</li> <li>5. It does not have any of the only 6 indoor facilities for full scale bowls in New Zealand.</li> </ol> <p>Bowls Canterbury Report (2011) Post-EQ, recommended rationalisation across Christchurch</p>
<p><b>Supporting Documentation</b> Please provide copies of any other documents supporting your submission.</p>	<p>As attached – spreadsheet and link to map: <a href="http://www.arcgis.com/apps/presentation/index.html?webmap=d78c790604a44a3082b4f28a742eac7f&amp;slide=1">http://www.arcgis.com/apps/presentation/index.html?webmap=d78c790604a44a3082b4f28a742eac7f&amp;slide=1</a></p>

NAME OF SPORT	CYCLING (NOTE: RESPONSE ONLY RECEIVED FROM BMX)									
<b>Participation/ Membership Data</b> (source: Sport Canterbury Report Card)	2007	2008	2009	2010	2011	2012	2013	2014	2015	2016
							246	251	253	269
<b>Participation/ Membership Trend</b> (source: Sport Canterbury Report Card)	BMZ membership is relatively stable (23 more members over four-year period across Canterbury)									
<b>Comments</b>	Membership is increasing every year across the board for all BMX clubs as facilities have rebuilt/recovered from 2011 Earthquakes. Memberships were affected by physical damage to facilities & destruction/red zoning of track sites and the communities surrounding existing facilities.									
<b>Current Facility Network</b> This outlines the known facilities that the sport use. At this point in time we are only collecting information on facilities that are used by participants across territorial authority boundaries.	<b>STATUS</b>	<b>INTERNATIONAL</b>	<b>NATIONAL</b>	<b>REGIONAL</b>	<b>SUB-REGIONAL</b>					
	Existing	Christchurch Adventure Park (MTB)	Bexley (BMX) Kyle Park (BMX)	Bexley Kyle Park & Rangiora (all BMX) Denton Oval (Track)	Amberley (BMX)					
	Planned/Under Development									
	Proposed									
Note: local facilities will be covered at a later stage.										
<b>Sport Facility Network</b> Do you agree with the current hierarchy of facilities? If no, please explain.	BMXNZ and Mainland North Region BMX disagree with the status given to CHC BMX Track in Kyle Park Hornby and Mainland North Region BMX has changed this as reflected above. The CHC BMX track and the NAC BMX Facility in Bexley Reserve are both National level facilities. Both these facilities are ready and capable of hosting National level events right now. CHC BMX Club hosted the Nationals in 2015 and NAC BMX Club has bid and will bid again to host national events in the future.									
<b>Further Developments</b> Are there any other planned or proposed facilities not listed here that will add to the network of facilities for your sport?	<p>There has been construction of a new regional BMX facility in Amberley by the Hurunui BMX club. This facility is targeted as a sub-regional facility for high end recreational use. It is still early days for this new club so it is not yet affiliated with BMXNZ but as this club grows and develops, it is expected that they will eventually affiliate with BMXNZ and therefore become part of Mainland North Region BMX.</p> <p>A new BMX pump track is proposed for construction on red-zoned land in Kaiapoi which will compliment activities taking place at the North Canterbury BMX Club facility.</p> <p>Christchurch City Council is proposing to add a mountain bike track and a kids' learn to ride area into Bexley Reserve as part of the Bexley Reserve Management Plan. This and the already constructed pump track at the NAC BMX facility will compliment activities at NAC BMX Club.</p>									

NAME OF SPORT	CYCLING (NOTE: RESPONSE ONLY RECEIVED FROM BMX)
<p><b>Improvements</b> Are there any planned or proposed improvements to the existing facility network for your sport?</p>	<p>North Canterbury BMX is proposing to build a new National level BMX track, and alongside this, erect clubrooms that will be shared as a central hub for all North Canterbury cycling codes including BMX, Road Cycling and Mountain Biking.</p> <p>In the short term, North Canterbury BMX is installing a new start gate that complies with BMXNZ Health &amp; Safety requirements. This gate will be installed prior to the start of the 2017-18 season.</p> <p>Christchurch City BMX Club is working on a proposal to get night lighting back up and running at their facility. This will allow training sessions to run later towards the beginning and end of each season when we're all still racing against fast approaching darkness. It will also enable the club to host night racing, which is great for rider development and fun on bikes for all ages and abilities.</p> <p>North Avon Christchurch BMX Club is working to get electricity into their track facility. The NAC Club has been without electricity since the Feb 2011 earthquakes when the site was cut off with red zoning and deconstruction of the Bexley subdivision. The club has been effectively using a cumbersome system of generators to run club training as well as South Island, regional and local level events. With the completion of the new track build back in 014/15, the club has been working hard to find funding to install cabling and meters and get electricity back into the site. Power is required to work the start gate, points hut and shop as well as proposed night lighting, which as for CHC BMX Club, will assist with training at the start and end of each season and allow for night racing as well.</p> <p>NAC BMX Club is also working to construct a start hill cover over the back of the 5.5m start ramp and gate to bring the facility into line with other national level facilities in the North Island. Funding was approved to pay for the design work and this project is now at Building Consent stage. Further funds will be necessary before construction can begin.</p> <p>NAC BMX Clubs final project, also running at the moment, is to find final funding to purchase and install a start gate on the clubs' lower 3m start ramp to assist with rider recruitment and retention. Making the gate start less scary and coaching younger and newer riders off the lower ramp is more inclusive and allows for better progression in our sport. Some funding has already been found for this project but more is needed to get it off the ground.</p>
<p>Are there any National or Regional Sports Facility Plans that are used to guide facility development for your sport? Yes/No</p>	<p>National Cycling Strategy (2010) excerpts</p> <ul style="list-style-type: none"> <li>• No specific recommendations for Canterbury.</li> <li>• Overall NZ does not require any further velodromes or BMX supercross tracks on a population basis</li> <li>• BMX does require more regional-level facilities</li> <li>• MTB does not require any particular new facilities. Enhancing access to existing tracks is likely to be a major area of development interest</li> </ul> <p>There are guidelines for BMX facility development in NZ. BMXNZ recommends the use of UCI (International Cycling Body) guidelines for clubs constructing new tracks.</p> <p>In addition to the UCI guidelines, the BMXNZ Rule Book also has guidelines for clubs building tracks suitable for racing. These can be found at <a href="https://www.cyclingnewzealand.nz/media/2568/2568.pdf">https://www.cyclingnewzealand.nz/media/2568/2568.pdf</a> (check pages 20-22, clauses .014 to 2.022)</p>
<p><b>Supporting Documentation</b> Please provide copies of any other documents supporting your submission.</p>	<p>BMXNZ Strategic Plan: <a href="https://www.cyclingnewzealand.nz/media/339/339.pdf">https://www.cyclingnewzealand.nz/media/339/339.pdf</a></p> <p>The BMXNZ strategic plan sets out 3 key objectives for the Sport of BMX in New Zealand. Development and good management of high level facilities in the Canterbury (Mainland North BMX) Region supports two of the three objectives. It is important to have well placed, high quality facilities to encourage increasing membership and membership retention. It is also very beneficial to have well managed regional/national/international level facilities to encourage rider development in all levels of the sport.</p>

NAME OF SPORT	FOOTBALL									
<b>Participation/ Membership Data</b> (source: Sport Canterbury Report Card)	2007	2008	2009	2010	2011	2012	2013	2014	2015	2016
	11479	12273	11553	11348	10414	11212	10593	11375	12162	13855
<b>Participation/ Membership Trend</b> (source: Sport Canterbury Report Card)	Increasing									
<b>Comments</b>	<p>We are continuing to see growth across our junior and youth numbers along with increased participation in girls. This may lead to new field configurations as we progress. We are also being asked to introduce a new size field for youth that sits between the current intermediate size and the senior size fields. We are working on a separate project on this.</p> <p>This does not include Futsal numbers that are now above 5000 players per year as well.</p>									
<b>Current Facility Network</b> This outlines the known facilities that the sport use. At this point in time we are only collecting information on facilities that are used by participants across territorial authority boundaries.	<b>STATUS</b>	<b>INTERNATIONAL</b>		<b>NATIONAL</b>		<b>REGIONAL</b>		<b>SUB-REGIONAL</b>		
	Existing	AMI Temp Stadium		English Park		Avonhead Park Ferryhead Park		Foster Park Kendall Park		
	Planned/Under Development									
	Proposed	Multi-Sport Arena				Christchurch Football Centre				
	Note: local facilities will be covered at a later stage.									
<b>Sport Facility Network</b> Do you agree with the current hierarchy of facilities? If no, please explain.	Yes, the hierarchy looks in line with current facilities. I have added Avonhead and Ferryhead Park. Not sure if this is where they sit.									
<b>Further Developments</b> Are there any other planned or proposed facilities not listed here that will add to the network of facilities for your sport?	Tulett Park will come on line soon as a field for use (New Sand Slit).									

NAME OF SPORT	FOOTBALL
<p><b>Improvements</b> Are there any planned or proposed improvements to the existing facility network for your sport?</p>	<p>Mainland Football has started discussions with Council on a number of projects that are referred to in the recommendations below.</p> <p>Federation based.</p> <p>Definite feeling that English park with a single venue and average floodlighting fails to meet the demand of the Federation Community/ Talent and High-performance programs.</p> <p>An initial discussion has been held with Sport Canterbury and Christchurch City Council to explore options at Nga Puna Wai. The initial feedback has been highly positive with the basic concept being the potential sale of English park by the council would be used to develop a new Home of Football with multiple pitches and superior floodlights within the new sports hub. Potential for council to gain some financial benefit or create funds for other facility development.</p> <p>Club Based</p> <p>The federation is in contact with Council and a number of clubs looking to develop their facilities. Major discussions are around football clubs that will deliver community and talent development programs throughout the year. (Licensed Clubs) These clubs need access to run programs in spaces that will not interfere with Cricket.</p> <p>Key Clubs: Coastal Spirit, Cashmere Technical, Ferrymead, Halswell, Nomads, Parklands, Waimakariri, Selwyn. In all cases clubs have shown interest in how an artificial surface could be part of their long-term plans.</p> <p>There is a real concern with regards to the hours use that is being achieved on sand slit fields. Significant disruption this year,</p> <p>So how could strategically-placed artificial surfaces with these clubs be of benefit to the club and the wider community. For example, located close to schools. Shared use. Classic example here being St Albans School use of English Park which is a daily occurrence. Other codes also use English Park from time to time.</p>
<p>Are there any National or Regional Sports Facility Plans that are used to guide facility development for your sport? Yes/No</p>	<p>A New Zealand Football National Facilities Strategy – 2010 to 2021 was developed in 2010. This was reviewed and updated in 2016. The 2010 Strategy stated the following key points</p> <p>Canterbury Region included among those areas identified as priorities for additional fields. This was a long-term need, with 3 additional field FTEs identified as being require by 2021</p> <p>More 'local football centres' are required, although this may not require new fields</p> <p>Local football centres would ideally feature football as primary use, artificial turf(s), an all-grade training base, possible school co-locations &amp; complementary multi-sport usage</p> <p>Developments to maximise field utilisation to take priority over providing premier grade standards</p> <p>The 2016 Update also recommended:</p> <ul style="list-style-type: none"> <li>Improve the quality of pitches for club competition</li> <li>Access to more training facilities</li> <li>Access to more futsal pitches</li> </ul> <p>Mainland Football developed a Facilities Plan in 2013. Excerpts from that strategy state:</p> <p>The quality and quantity of both training and competition games is having an adverse effect on the development of the game, as is the undersupply of training venues,</p> <p>The overall demand for competition can be accommodated within the existing network of facilities available across the Mainland Football area. There is a total projected surplus of competition fields of 157.2 hours a week,</p> <p>There is projected to be a significant shortfall in training fields (345.7 hours a week),</p> <p>The need to develop a Christchurch based football hub, with a minimum of two floodlit artificial surfaces,</p> <p>Re-consider the role of English Park as the administration hub for Mainland Football. These points are covered off in the discussion around Nga Pun Wai.</p> <p>Look for community venues that can be used year-round, Ties into our Licensed Club Strategy for player development and community football delivery.</p> <p>Develop a network of multi-club, higher quality pitches (preferably sand based) in areas of greatest demand within Christchurch and at Saxton Field in Nelson. Need to address this and look at potential for strategically based artificial fields. This is in the main due to poor performance of sand based pitches in the city at the moment. Very Low usage</p> <p>Investigate the appropriate installation of training lights in areas of need,</p> <p>Advocating to Councils to enable field distribution to be considered on a region wide basis,</p> <p>Harness the growth of Futsal by working with Councils and other facility providers to ensure it is factored into existing and new facilities,</p> <p>Explore opportunities to develop dedicated outdoor (potentially covered) Futsal centres.</p>
<p><b>Supporting Documentation</b> Please provide copies of any other documents supporting your submission.</p>	

NAME OF SPORT	GYMSPORTS									
<b>Participation/ Membership Data</b> (source: Sport Canterbury Report Card)	2007	2008	2009	2010	2011	2012	2013	2014	2015	2016
					8468	9615	9720	9825	10808	5714
<b>Membership</b> (source: Draft National GymSports Facility Strategy)						3,628	3,693	4,093	4,691	5,438
<b>Casual Participation</b> (source: GNZ Database)									35,956	38,842
<b>Participation/ Membership Trend</b> (source: Sport Canterbury Report Card)	Cannot compare due to changing reporting protocols There has been a sustained increase in membership and casual participation activity over the last 5 years across the region.									
<b>Comments</b>	Changed reporting process in 2016 to only count true members. Previously had been counting some members multiple times a year as they engaged in different programmes. The figures outlined above have been modified to align with the Draft National Facility Strategy (individual members undertaking GymSports activity) and the inclusion of casual participation statistics from the GNZ database.									
<b>Current Facility Network</b> This outlines the known facilities that the sport use. At this point in time we are only collecting information on facilities that are used by participants across territorial authority boundaries.	<b>STATUS</b>	<b>INTERNATIONAL</b>	<b>NATIONAL</b>	<b>REGIONAL</b>	<b>SUB-REGIONAL</b>					
	Existing	Horncastle Arena		Christchurch School of Gymnastics (need to check as cited as two different tiers in the strategy)	Olympia Gymnastic Sports CSG - Impact Alpha site ICE Trampoline/Rangiora Gymnastics South Canterbury GymSports					
	Planned/Under Development	Metro Sports Facility	Metro Sports Facility							
	Proposed			New CSG Olympia (tier to be determined)	Access and utilisation of the Jellie Park Sport and Recreation Centre					
Note: local facilities will be covered at a later stage.										

NAME OF SPORT	GYMSPORTS
<p><b>Sport Facility Network</b> Do you agree with the current hierarchy of facilities? If no, please explain.</p>	<p>The above table has been changed to reflect what is currently outlined in the Draft National GymSports Facility Strategy. This may change slightly, with greater clarification, when the Christchurch GymSports Facility Plan is finalised.</p> <p>The number of regional facilities needs to be determined as different GymSports codes are delivered across the respective facilities.</p> <p>ICE Trampoline cannot be a regional facility in its own right due to the hierarchy requirement of needing to offer, or be able to offer, multiple GymSports codes through to a High-Performance level.</p>
<p><b>Further Developments</b> Are there any other planned or proposed facilities not listed here that will add to the network of facilities for your sport?</p>	<p>An informal EOI has been submitted to access and use the Jellie Park Sport and Recreation Centre once High Performance relocates to the Metro Sports Facility. Should this be permitted, the geographic spread of the existing network will be altered and provide a more even distribution of facilities.</p>
<p><b>Improvements</b> Are there any planned or proposed improvements to the existing facility network for your sport?</p>	<p>The proposed extension of the existing Olympia Gymnastic Sports facility has been added – with the level of hierarchy to be determined.</p>
<p>Are there any National or Regional Sports Facility Plans that are used to guide facility development for your sport? Yes/No</p>	<p>GNZ is currently finalising a National Facilities Strategy. A Canterbury Regional Plan will follow. The Draft National Facility Strategy states the proposed approaches for Canterbury:</p> <ul style="list-style-type: none"> <li>Develop a Regional Gymnastics Plan.</li> <li>Explore developing a regional hub</li> <li>Explore developing / optimising sub-regional hubs in key areas of demand in and surrounding Christchurch (in areas such as Lincoln/Rolleston)</li> </ul>
<p><b>Supporting Documentation</b> Please provide copies of any other documents supporting your submission.</p>	<p>As above.</p>

NAME OF SPORT	HOCKEY									
<b>Participation/ Membership Data</b> (source: Sport Canterbury Report Card)	2007	2008	2009	2010	2011	2012	2013	2014	2015	2016
	3667	3712	3979	4046	3943	4011	4412	4714	4507	5156 (report card) 5800 - CHA
<b>Participation/ Membership Trend</b> (source: Sport Canterbury Report Card)	Increasing trend - limited by turf availability/ increase in 2016 figures due to Primary School Sport estimated numbers being added									
<b>Comments</b>	<p>Changed reporting process in 2016 to only count true members. Previously had been counting some members multiple times a year as they engaged in different programmes.</p> <p>The figures outlined above have been modified to align with the Draft National Facility Strategy (individual members undertaking GymSports activity) and the inclusion of casual participation statistics from the GNZ database.</p>									
<b>Current Facility Network</b> This outlines the known facilities that the sport use. At this point in time we are only collecting information on facilities that are used by participants across territorial authority boundaries.	<b>STATUS</b>	<b>INTERNATIONAL</b>	<b>NATIONAL</b>	<b>REGIONAL</b>	<b>SUB-REGIONAL</b>					
	Existing	Marist Park Waimakariri - temporary infrastructure used	Nunweek Park Marist Park	Marist Park Nunweek Park Waimakariri						
	Planned/Under Development	Nga Puna Wai	Nga Puna Wai	Nga Puna Wai						
	Proposed	Nga Puna Wai - 3rd turf								
Note: local facilities will be covered at a later stage.										

NAME OF SPORT	HOCKEY
<p><b>Sport Facility Network</b> Do you agree with the current hierarchy of facilities? If no, please explain.</p>	See above
<p><b>Further Developments</b> Are there any other planned or proposed facilities not listed here that will add to the network of facilities for your sport?</p>	We support the “Hub & Spoke” model as supported by the Hockey NZ Facilities Strategy. Simplistically this is based on central full turf locations to play competitions, with small turfs spread about our community for practices & junior development.
<p><b>Improvements</b> Are there any planned or proposed improvements to the existing facility network for your sport?</p>	<p>We are assessing how we use Nunweek Park in the future, given the plans with Nga Puna Wai. In the near future, the three turfs will need replacing.</p> <p>We will discuss with the Waimakariri DC the need for spectator seating &amp; cover to improve the experience there.</p>
<p>Are there any National or Regional Sports Facility Plans that are used to guide facility development for your sport? Yes/No</p>	<p>Hockey New Zealand National Facilities Strategy (2010)</p> <p>Note: This was pre-EQ Canterbury</p> <p>Based on the strategy estimates, no additional FTE turfs are required to cover any projected growth to 2030 in the Canterbury Region - no, believe we will need a 3rd turf at Nga Puna Wai well before 2030.</p> <p>A key initiative is to encourage entry level hockey to be delivered locally on a range of surfaces - agree, see above</p> <p>Seek to use non-hockey funded surfaces for practice &amp; junior competition - likely not necessary</p> <p>Partner with schools - (1) share cost burden (2) advocate for turfs &amp; part turfs (hard court overlays) on school sites - likely not necessary</p> <p>Supplement core hub facilities with satellite turf to improve accessibility - agree, see above</p> <p>Therefore, an updated National Facilities Strategy was developed in 2016 which highlights the following:</p> <p>The ratio of players per turf is estimated at 750 in Canterbury. (pg12) - in 2017, we are almost double that</p> <p>Current demand pressures are stated (p13)</p> <p>The impact of travel time is also an important consideration as many Associations cover a large geographical area (p15) - just a reality. We have been able to introduce the new Waimakariri turf &amp; associated travel perception, in 2017</p>
<p><b>Supporting Documentation</b> Please provide copies of any other documents supporting your submission.</p>	

NAME OF SPORT	ICE SPORTS (FIGURE SKATING)									
<b>Participation/ Membership Data</b> (source: Sport Canterbury Report Card) Membership information from the two local figure skating clubs - Centaurus Ice Skating Club (CISC) and Canterbury Masters Figure Skating Club (CMFSC). Membership data collected in May each year for preceding 12 months - 2011 data was collected May 2012	2007	2008	2009	2010	2011	2012	2013	2014	2015	2016
					207	228	229	262	227	221
<b>Participation/ Membership Trend</b> (source: Sport Canterbury Report Card)	No available data									
<b>Comments</b>	Approximately half of the total club numbers are involved in competitive skating, the balance are recreational (primarily in CMFSC). The membership numbers appear to reasonably stable after a low in 2011 following the earthquakes. The peak in 2014 was mainly in adult recreational skaters. Only a very small percentage of skaters belong to a club. The balance are primarily recreational skaters at public sessions and those involved in the KiwiSkate learn to skate programme.									
<b>Current Facility Network</b> This outlines the known facilities that the sport use. At this point in time we are only collecting information on facilities that are used by participants across territorial authority boundaries.	<b>STATUS</b>	<b>INTERNATIONAL</b>	<b>NATIONAL</b>	<b>REGIONAL</b>	<b>SUB-REGIONAL</b>					
	Existing	Alpine Arena	Alpine Arena	Alpine Arena						
	Planned/Under Development									
	Proposed									
Note: local facilities will be covered at a later stage.										

NAME OF SPORT	ICE SPORTS (FIGURE SKATING)
<p><b>Sport Facility Network</b> Do you agree with the current hierarchy of facilities? If no, please explain.</p>	<p>The current hierarchy is correct. However, competing demand between the recreational skaters, ice hockey, speed skating and figure skating does create some serious challenges trying to get sufficient ice time to host competition at regional or national level. While the rink is technically large enough to host international competitions NZIFSA preference would be to hold any international competitions in either Auckland or Dunedin where they have 60m x 30m rinks.</p>
<p><b>Further Developments</b> Are there any other planned or proposed facilities not listed here that will add to the network of facilities for your sport?</p>	<p>None planned</p>
<p><b>Improvements</b> Are there any planned or proposed improvements to the existing facility network for your sport?</p>	<p>None planned</p>
<p>Are there any National or Regional Sports Facility Plans that are used to guide facility development for your sport? Yes/No</p>	<p>There is no national or regional facility strategy for Ice Sports</p>
<p><b>General Comments</b></p>	<p>Christchurch has, in the past, been the powerhouse of figure skating in New Zealand. That is no longer the case. There are a number of factors that are all inter-related and contribute to this.</p> <p>Cost is a significant challenge for individuals. Alpine Arena is privately owned and as it's not subsidised, passes costs on to skaters. Running an ice rink is expensive. There are limits to the number of figure skaters that can safely train at any one time and so limited opportunity to spread the costs. If the cost of ice is too high then the skaters train less, so the cost per session increases or the amount of ice time available to train decreases. Keeping costs down is key. Some of the newer facilities have taken opportunities with co-locating rinks with swimming pools for example, to use heat exchange systems that reduce the running costs for both facilities.</p> <p>Availability of ice time is a limiting factor, with competition for ice time between the ice sports in the time that remains around public sessions and KiwiSkate sessions. Training times are often at less than desirable times. Cuts made to the number of figure sessions due to competing demands and to the limited number of skaters on some sessions has meant that there isn't actually enough ice time for anyone to train at a competitive level.</p> <p>Availability of high level coaches. To attract and retain high level coaches they need to be able to make a living from coaching, and they can't do this if there is insufficient ice time available for figure skating lessons. If we have a very small pool of coaches, as we do at present, then there is less opportunity, in the limited ice time available, for individuals to have lessons. Figure skating is a highly technical sport and lessons at a competitive level are on a one-one basis. In a two hour figure skating session a coach may therefore only work with four skaters. If there isn't an opportunity for skaters to have lessons they are less likely to be competitive and they are less likely to turn up. Less skaters on the ice, in the longer term, means increased costs and /or less ice time is made available.</p>

NAME OF SPORT	ICE SPORTS (SPEED SKATING ONLY)									
<b>Participation/ Membership Data</b> <small>(source: Sport Canterbury Report Card)</small>	2007	2008	2009	2010	2011	2012	2013	2014	2015	2016
			80	70	70	65	50	50	60	80
<b>Participation/ Membership Trend</b> <small>(source: Sport Canterbury Report Card)</small>	No available data									
<b>Comments</b>	<p>The above indicates registered members of clubs, however many more people skate just for recreation and do not belong to clubs. Club membership fluctuates from year to year. We did not record registrations prior to 2009.</p> <p>There are four speed clubs in Christchurch.</p>									
<b>Current Facility Network</b> <small>This outlines the known facilities that the sport use. At this point in time we are only collecting information on facilities that are used by participants across territorial authority boundaries.</small>	<b>STATUS</b>	<b>INTERNATIONAL</b>	<b>NATIONAL</b>	<b>REGIONAL</b>	<b>SUB-REGIONAL</b>					
	Existing		Alpine Arena	Alpine Arena						
	Planned/Under Development									
	Proposed									
Note: local facilities will be covered at a later stage.										

NAME OF SPORT	ICE SPORTS (SPEED SKATING ONLY)
<p><b>Sport Facility Network</b> Do you agree with the current hierarchy of facilities? If no, please explain.</p>	<p>The Alpine Ice Arena is privately owned facility, it would be more beneficial for all the ice sports if an ice rink was funded and managed by the Council or a collaborative of the different ice sports.</p>
<p><b>Further Developments</b> Are there any other planned or proposed facilities not listed here that will add to the network of facilities for your sport?</p>	<p>No rinks are planned for the Canterbury region.</p>
<p><b>Improvements</b> Are there any planned or proposed improvements to the existing facility network for your sport?</p>	<p>Not aware of any</p>
<p>Are there any National or Regional Sports Facility Plans that are used to guide facility development for your sport? Yes/No</p>	<p>We are not aware of any national or regional facility strategy for Ice Sports, However, a feasibility study was conducted in 2001 (still available).</p>
<p><b>General Comments</b></p>	<p>As Christchurch does not have a full-sized ice rink, 60m x30m, we are unable to hold International events. The only full-sized rinks are in Dunedin and Auckland.</p> <p>ISSNZ are reluctant to also hold the National Championships at the Alpine rink owing to the size as the senior skaters travel at such a speed, a rink smaller than 60m x30m makes it very dangerous.</p>

NAME OF SPORT	ROWING									
<b>Participation/ Membership Data</b> (source: Sport Canterbury Report Card)	2007	2008	2009	2010	2011	2012	2013	2014	2015	2016
	680	1023	1050	810	666	660	588	810	867	987
<b>Participation/ Membership Trend</b> (source: Sport Canterbury Report Card)	Growing since 2010/11 earthquakes									
<b>Comments</b>	The above indicates registered members of clubs, however many more people skate just for recreation and do not belong to clubs. Club membership fluctuates from year to year. We did not record registrations prior to 2009. There are four speed clubs in Christchurch.									
<b>Current Facility Network</b> This outlines the known facilities that the sport use. At this point in time we are only collecting information on facilities that are used by participants across territorial authority boundaries.	<b>STATUS</b>	<b>INTERNATIONAL</b>		<b>NATIONAL</b>		<b>REGIONAL</b>		<b>SUB-REGIONAL</b>		
	Existing					Lake Hood		Kerrs Reach Lower Waimakariri River Lower Selwyn River Kaiapoi River		
	Planned/Under Development									
	Proposed	East Lake Park		East Lake Park		East Lake Park		East Lake Park		
Note: local facilities will be covered at a later stage.										
<b>Sport Facility Network</b> Do you agree with the current hierarchy of facilities? If no, please explain.										
<b>Further Developments</b> Are there any other planned or proposed facilities not listed here that will add to the network of facilities for your sport?	East Lake Park is a proposal that incorporates a venue for water sports in the Residential Red Zone. The proposed lake would have the size to cater for full rowing course. Proposed canal from Fitzgerald Avenue to Kerrs Reach									
<b>Improvements</b> Are there any planned or proposed improvements to the existing facility network for your sport?	Boatshed developments for: Cure Boat Club - Kaiapoi Avon Rowing Club (St Thomas') - Lower Selwyn Proposed trailer park at Kerrs Reach									
Are there any National or Regional Sports Facility Plans that are used to guide facility development for your sport? Yes/No	We are not aware of any national or regional facility strategy for Rowing									
<b>Supporting Documentation</b> Please provide copies of any other documents supporting your submission.										

NAME OF SPORT	RUGBY LEAGUE									
<b>Participation/ Membership Data</b> (source: Sport Canterbury Report Card)	2007	2008	2009	2010	2011	2012	2013	2014	2015	2016
	2372	2203	2262	2461	2242	2249	2325	2474	2393	2684
<b>Participation/ Membership Trend</b> (source: Sport Canterbury Report Card)	Relatively stable									
<b>Comments</b>	<p>Besides 2016 the participation rate is relatively static</p> <ul style="list-style-type: none"> <li>The Southern League Zone - including the Canterbury region - is projected to have an increase in teams from 204(2012) to 269(2021).</li> <li>National participation is estimated to increase over the next 10 years by around 15% (for adults) and 25% (for juniors), although this is unevenly spread between and within Rugby League Zones.</li> </ul>									
<b>Current Facility Network</b> This outlines the known facilities that the sport use. At this point in time we are only collecting information on facilities that are used by participants across territorial authority boundaries.	<b>STATUS</b>	<b>INTERNATIONAL</b>		<b>NATIONAL</b>		<b>REGIONAL</b>		<b>SUB-REGIONAL</b>		
	Existing	AMI Temp Stadium		AMI Temp Stadium		AMI Temp Stadium				
	Planned/Under Development	Nga Puna Wai		Nga Puna Wai		Nga Puna Wai		Nga Puna Wai		
	Proposed	Multi-Purpose Arena		Multi-Purpose Arena						
Note: local facilities will be covered at a later stage.										
<b>Sport Facility Network</b> Do you agree with the current hierarchy of facilities? If no, please explain.	Yes									
<b>Further Developments</b> Are there any other planned or proposed facilities not listed here that will add to the network of facilities for your sport?	Nothing at this stage that is progressed enough for comment									
<b>Improvements</b> Are there any planned or proposed improvements to the existing facility network for your sport?	We are working with Council to identify the priority around facilities. A major issue for us is the quality of our Clubrooms and lighting									
Are there any National or Regional Sports Facility Plans that are used to guide facility development for your sport? Yes/No	<p>Excerpts NZ Rugby League Draft Facilities Strategy 2011-2021 (2012).</p> <p>A zone-level training venue is required within each zone.</p> <p>There is limited access to small scale stadiums (2500-5000) to act as premier venues for Tier 3 &amp; 4 national &amp; zone competitions.</p>									
<b>Supporting Documentation</b> Please provide copies of any other documents supporting your submission.										

NAME OF SPORT	SWIMMING									
<b>Participation/ Membership Data</b> (source: Sport Canterbury Report Card)	2007	2008	2009	2010	2011	2012	2013	2014	2015	2016
				1565	387	934	1325	1357	1348	1585
<b>Participation/ Membership Trend</b> (source: Sport Canterbury Report Card)	Significant decline post-EQs with recent return to pre-EQ levels									
<b>Comments</b>	These numbers are for registered swimmers. Recreational swimming provides a much large number of people who would use these facilities.									
<b>Current Facility Network</b> This outlines the known facilities that the sport use. At this point in time we are only collecting information on facilities that are used by participants across territorial authority boundaries.	<b>STATUS</b>	<b>INTERNATIONAL</b>	<b>NATIONAL</b>	<b>REGIONAL</b>	<b>SUB-REGIONAL</b>					
	Existing		Timaru	Jellie Park Selwyn AC EA Network	Dudley Wharenui					
	Planned/Under Development	Metro Sports Facility	Metro Sports Facility	Metro Sports Facility	Metro Sports Facility QEII Hornby					
	Proposed									
	Note: local facilities will be covered at a later stage.									
<b>Sport Facility Network</b> Do you agree with the current hierarchy of facilities? If no, please explain.										
<b>Further Developments</b> Are there any other planned or proposed facilities not listed here that will add to the network of facilities for your sport?										
<b>Improvements</b> Are there any planned or proposed improvements to the existing facility network for your sport?	<p>National Facilities Strategy for Aquatic Sports (2011)</p> <p>Viewed as people per standard sized pool (8 lane, 25m), Canterbury has 11,441 people per pool, while New Zealand has 10,518 people per pool overall. Currently no suitable facility in the Canterbury Region for international competition, National competition or any regional competition that requires a 50m competitive pool.</p> <p>Demand for competitive use/training conflicts with community use. Targeted use of service-level agreements &amp; strategic investment support is recommended to better balance different uses at current facilities in the priority locations.</p> <p>Allocation to competitive sports is important but is uneconomical for asset owners to subsidise competitive sports to over the 20%-40% of total usage they usually represent.</p> <p>Better use arrangements in existing facilities may be required to meet more specific needs for competitive use; for an aging population (especially the 50+ age group); and for filling non-peak use periods.</p> <p>Note: Post-EQs saw a significant reduction in pool capacity in greater Christchurch.</p>									
Are there any National or Regional Sports Facility Plans that are used to guide facility development for your sport? Yes/No										
<b>Supporting Documentation</b> Please provide copies of any other documents supporting your submission.										

NAME OF SPORT	TENNIS									
<b>Participation/ Membership Data</b> (source: Sport Canterbury Report Card)	2007	2008	2009	2010	2011	2012	2013	2014	2015	2016
		7419	7469	8844*	8326*	7926*	8122*	6617	6275	6063
<b>Participation/ Membership Trend</b> (source: Sport Canterbury Report Card)	Decline in membership over time									
<b>Comments</b>	Figures differ across Sport Canterbury data set. It is believed that Canterbury has the highest proportion of club members per 1,000 population (18.2) than any other region.									
<b>Current Facility Network</b> This outlines the known facilities that the sport use. At this point in time we are only collecting information on facilities that are used by participants across territorial authority boundaries.	<b>STATUS</b>	<b>INTERNATIONAL</b>	<b>NATIONAL</b>	<b>REGIONAL</b>	<b>SUB-REGIONAL</b>					
	Existing	Wilding Park	Wilding Park	Wilding Park Ashburton						
	Planned/Under Development	Nga Puna Wai	Nga Puna Wai	Nga Puna Wai	Nga Puna Wai	Nga Puna Wai				
	Proposed			Rangiora / Southbrook proposal						
Note: local facilities will be covered at a later stage.										
<b>Sport Facility Network</b> Do you agree with the current hierarchy of facilities? If no, please explain.	Yes									
<b>Further Developments</b> Are there any other planned or proposed facilities not listed here that will add to the network of facilities for your sport?	No									
<b>Improvements</b> Are there any planned or proposed improvements to the existing facility network for your sport?	Yes Bishopdale - Lights Weedons - Resurfacing Edgeware - Resurfacing Riccarton Domain - Resurfacing, potentially 1 additional court Hagley/ Te Kura - linked to amalgamation Elmwood Sportville - some discussion around an indoor court									
Are there any National or Regional Sports Facility Plans that are used to guide facility development for your sport? Yes/No	Future Delivery of Tennis: A Strategic Review of the Current Situation & Options for the Future (2013) stated the following facility specific recommendations: Collaborative strategic approach to facilities [ the Tennis community working together to optimise the tennis court network - "a unified voice"] Develop a regional facilities strategy									
<b>Supporting Documentation</b> Please provide copies of any other documents supporting your submission.										

NAME OF SPORT	VOLLEYBALL									
<b>Participation/ Membership Data</b> (source: Sport Canterbury Report Card)	2007	2008	2009	2010	2011	2012	2013	2014	2015	2016
	5428	4879	5050	5024	2243	1605	1791	2369	1903	1938
<b>Participation/ Membership Trend</b> (source: Sport Canterbury Report Card)	Significant decline post 2010 (EQ period).									
<b>Comments</b>	Unless the reporting mechanism for these numbers is known, they cannot be verified as accurate. Our own estimates for 2016 are closer to 4000, not including outdoor competitions. NZSSSC calculate 2189 for school participants alone.									
<b>Current Facility Network</b> This outlines the known facilities that the sport use. At this point in time we are only collecting information on facilities that are used by participants across territorial authority boundaries.	<b>STATUS</b>	<b>INTERNATIONAL</b>	<b>NATIONAL</b>	<b>REGIONAL</b>	<b>SUB-REGIONAL</b>					
	Existing		Pioneer* EA-Networks*	Cowles Pioneer sand courts***	YMCA Bishopdale Wharenui**					
	Planned/Under Development	Metro Sports Facility		Waimakariri	Foster Park					
	Proposed									
<p>* Not big enough, nor up to standard for national level events</p> <p>** Not up to standard for anything but the lowest level recreational use, and comparatively very expensive)</p> <p>*** Adequate size for national level tournaments, but very poorly maintained, so does not attract even sub-regional level events</p> <p>Note: local facilities will be covered at a later stage.</p>										

NAME OF SPORT	VOLLEYBALL
<p><b>Sport Facility Network</b> Do you agree with the current hierarchy of facilities? If no, please explain.</p>	See comments above
<p><b>Further Developments</b> Are there any other planned or proposed facilities not listed here that will add to the network of facilities for your sport?</p>	Elmwood indoor (3 courts) and sand (3-6 courts). These may be available depending on negotiations with Elmwood club.
<p><b>Improvements</b> Are there any planned or proposed improvements to the existing facility network for your sport?</p>	Not aware of any
<p>Are there any National or Regional Sports Facility Plans that are used to guide facility development for your sport? Yes/No</p>	<p>The National Indoor Facilities Strategy (2013) developed by Aurecon for Sport NZ considered Volleyball. The following are excerpts from that Strategy:</p> <p>Population growth will slow and the proportion of older people increase in Canterbury.</p> <p>Canterbury is likely to experience increase in indoor sports demand by around 4% by 2031</p> <p>The Canterbury portion of the region has 1 council court per 36,000 people, and the West Coast portion 17,000.</p> <p>This was complemented by having 1 school court per 17,000 people in the Canterbury portion of the region; and per 33,000 in the West Coast portion. Both had lower than the average level of school court provision in New Zealand overall (all NZ is 1:14,000), but especially on the West Coast.</p> <p>Around 55% of school gyms in Canterbury portion of the region were over 35 years old; (all NZ is 42%).</p> <p>These school courts represent 65% of the indoor courts available in the Canterbury portion of the region; (all NZ is 66%).</p> <p>The strategy adapts the Sport England facility provision calculator to estimate that on a 'population-to-facility' basis the Canterbury portion of the region is currently relatively 'undersupplied' with indoor courts overall (by 15 courts). To a much lesser extent this is also the case for the West Coast portion (by 1 court).</p> <p>Allowing for change in future demand, the facility provision calculator estimates that the Canterbury portion region would be undersupplied by 16 courts by 2031, and the West Coast portion would be unchanged (based on this calculator).</p> <p>For national level tournaments, the Canterbury region overall has no current facilities (based on earthquake losses, although developments are in planning).</p> <p>The Greater Christchurch Indoor Sports Court Provision and Needs Analysis (Sept 2016) report states the following:</p> <p>Volleyball Canterbury consider 30 volleyball courts (15 netball courts) to be needed for volleyball in Christchurch. A comment was made that the 'spoke' facilities already exist through school facilities to service local need, but Christchurch lacks hubs for competition.</p>
<p><b>Supporting Documentation</b> Please provide copies of any other documents supporting your submission.</p>	<p>So long as the Metro Sports facility is available for our major events and 1 to 2 nights a week throughout the season, and is affordable, we should be fine for indoor volleyball capacity. However, the 17 courts proposed may not be enough to attract key national events currently held on 22 courts at Palmerston North.</p> <p>Beach volleyball has huge growth potential in New Zealand, and Canterbury especially, but our region lacks a good quality venue. The development at Elmwood has the potential to provide this, or proper maintenance and some additional facilities at Pioneer could also make a difference.</p> <p>Furthermore, volleyball is a growth sport throughout the country, but less so in Canterbury, where facilities lag well behind other regions (see points from Aurecon report, above). Volleyball is heavily dependent on adequate indoor facilities, and Canterbury will continue to struggle against other regions as long as the quality and capacity of our facilities is not on par.</p>

NAME OF SPORT	YACHTING									
<b>Participation/ Membership Data</b> (source: Sport Canterbury Report Card)	2007	2008	2009	2010	2011	2012	2013	2014	2015	2016
	1960				1980	1562 1712 - Yachting		1800	1652 1721 - Yachting	1688
<b>Participation/ Membership Trend</b> (source: Sport Canterbury Report Card)	The membership trend has been relatively stable post-EQs									
<b>Comments</b>	Around 2000 members pre-2011. A drop to 1600 immediately after 2011 then consistently 1700 till 2016.									
<b>Current Facility Network</b> This outlines the known facilities that the sport use. At this point in time we are only collecting information on facilities that are used by participants across territorial authority boundaries.	<b>STATUS</b>	<b>INTERNATIONAL</b>			<b>NATIONAL</b>		<b>REGIONAL</b>		<b>SUB-REGIONAL</b>	
	Existing				Naval Point		Naval Point		Lower Waimakariri River	
	Planned/Under Development				Naval Point		Naval Point			
	Proposed	East Lake Park			East Lake Park					
	Note: local facilities will be covered at a later stage.									
<b>Sport Facility Network</b> Do you agree with the current hierarchy of facilities? If no, please explain.	The Naval Point area and Lyttelton Harbour provides facilities for the majority of National and Regional sailing events. Naval Point, and to a much smaller extent Akaroa, is the only access to Ocean waters for the general recreational use for the region.									
<b>Further Developments</b> Are there any other planned or proposed facilities not listed here that will add to the network of facilities for your sport?	Naval Point, Te Ana Marina and Eastlake are the only large facilities on our radar!									
<b>Improvements</b> Are there any planned or proposed improvements to the existing facility network for your sport?										
Are there any National or Regional Sports Facility Plans that are used to guide facility development for your sport? Yes/No	We are not aware of any national or regional facility strategy for Yachting New Zealand Does not have a National facility strategy. Canterbury Yachting Association has identified facility development priorities as outlined in the attached planning document.									
<b>Supporting Documentation</b> Please provide copies of any other documents supporting your submission.	Copy of the (approved) CYA Planning Group Recommendations is attached.									