

3» NAVIGATE

THEME

Leading Self

SUB THEMES

Developing Self

Overview

In this activity, characters from movies are used to explore leadership qualities. There are many movies in which one or more characters plays a key leadership role in different contexts.

Facilitators choose a movie, or the Participants choose their own movie to view.

Participants watch the movie then answer the questions.

Possible movies include: Remember the Titans (PG), Dead Poets Society (PG), Glory Road (PG), Gandhi (PG), Coach Carter (M), Mighty Ducks (PG).

**Check that the movie rating is appropriate for the Participants.*



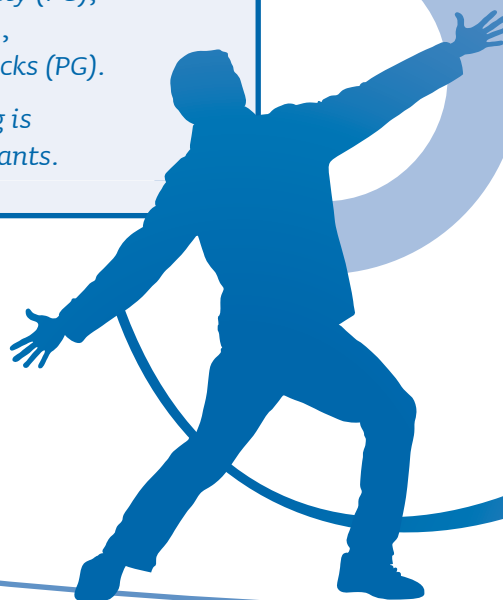
Movie Mentoring

Knowledge and skills

Leader planning, mentoring.

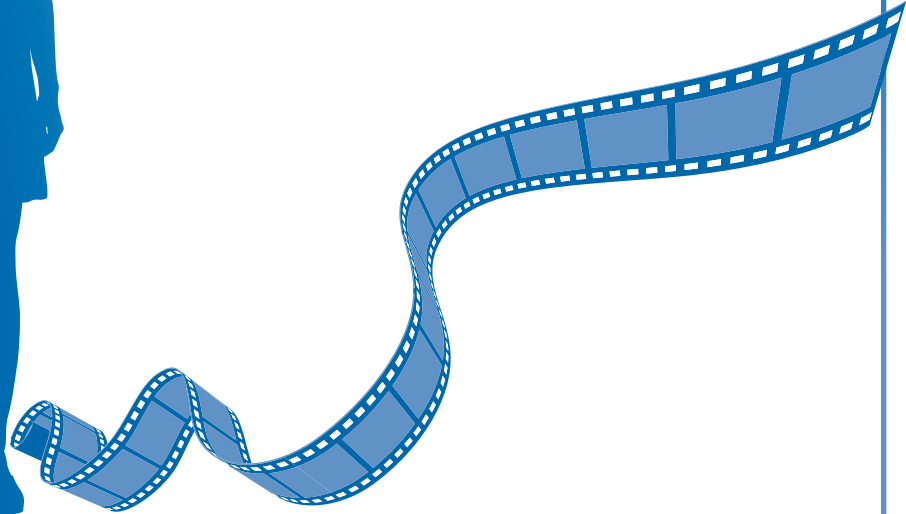
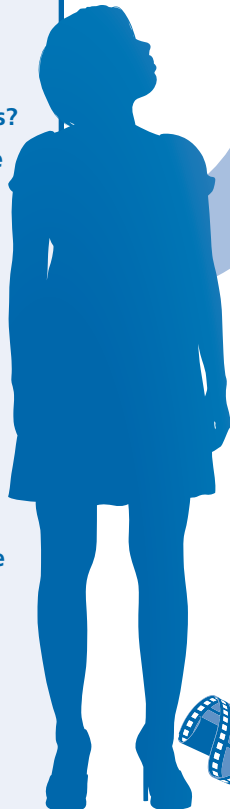
Resources

- Movie of choice
- Leader Journal template



Ask Participants to answer the following:

- Which character plays a key leadership role?
- What style of leadership do they use?
- Is their style effective? Why?
- What qualities does the leader have that are valuable to their followers?
- What behaviours does the leader exhibit?
- What change does the leader bring about? How does this change affect others?
- What does the leader do well?
- What could the leader do better?
- How does this leader balance their role with the time available?
- Do you relate to this leader's style?
- How would this leader's style work in a sport or recreation setting?



NAME _____

Movie Mentoring

1. Which character plays a key leadership role?

2. What style of leadership is it?

3. Is their style effective? Why?

4. What qualities does the leader have that are valuable to their followers?

5. What behaviours does the leader exhibit?

6. What change does the leader bring about?



7. How does this change affect others?

8. What does the leader do well?

9. What could the leader do better?

10. How does this leader balance their role with the time available?

11. Do you relate to this leader's style?

12. How would this leader's style work in a sport or recreation setting?

