

# **Example future scenario for community sport and recreation organisations**

Using the four-box approach

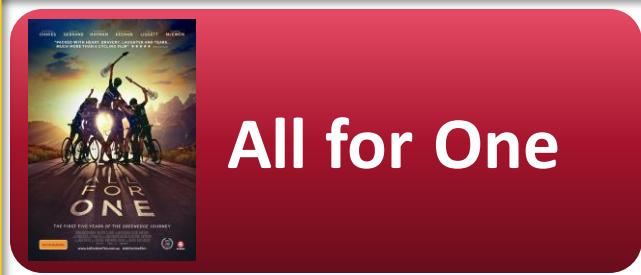
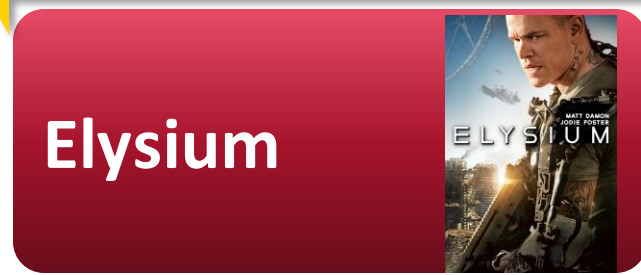
Uncertainties: Economic and Social Inequality; Pandemic trajectory

The pandemic recedes and people live largely free from health concerns. A rebounding economy ensures that previous widening inequality trends continue.

**COVID Recovery**  
A 'new normal' emerges and New Zealand adopts post-pandemic routines that limit ongoing impacts of a waning pandemic.

While New Zealand returns to a more relaxed health environment, collective lessons have been learnt that ensure the needs of everybody, especially the most vulnerable, are addressed.

**Virtuous Inequality**  
Widening extremes of social access and economic resources is the inevitable outcome of a successful 21<sup>st</sup> century economy.



**Social Inclusion**  
New Zealand concludes that to maintain societal wellbeing, significant resource redistribution is required to address ongoing challenges.

Post-pandemic freedom has ensured novel and lethal virus strains are widely distributed. The health environment is unpredictable and the focus now is on 'looking after number one'.

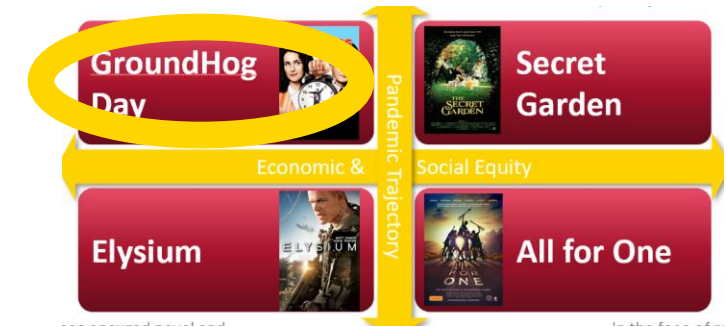
**Pandemic Continuity**  
Continued outbreaks of novel and challenging variants stress both health systems and social tolerance.

In the face of renewed pandemic risks and challenges, the new normal is for an elevated level of social and financial consideration to support all New Zealanders.



# GroundHog Day

The pandemic recedes and people live largely free from health concerns. A rebounding economy ensures that previous widening inequality trends continue.



- The pre-pandemic economic orthodoxy returns even more vigorously as New Zealand society focuses on monetary discipline, and the pursuit of individual financial wealth, as the keys to overall wellbeing.
- Given the improving health environment, collective social apathy has again settled on New Zealand, with those in more vulnerable situations primarily overlooked. The most well regarded are those whose business success enables them to pursue philanthropic opportunities to address specific needs.
- There are few restrictions on entertainment experiences, including sport, which has enjoyed a resurgence at domestic and international levels in recent years. However, a wide disparity exists between those who can afford to pursue these leisure activities as ticket prices and costs have steeply increased beyond the reach of many.
- New Zealand's sense of community is subtly undermined by indifference to those without social or financial assets. As a result, it is difficult to get traction on the stubborn issues related to continued inequality, including poverty levels and chronic health trends.
- New technologies that augment sensory experiences (through virtual reality) and physical capabilities (through augmentation) are readily available to those who can afford them. They enable broader perspectives and opportunities, though these are unavailable to those without the resources to take advantage of these developments.
- There is an underlying sense that a change of perspective is needed to effectively adapt to the growing challenges of the mid-century. Core governance institutions and policies seem to fit those who continue to succeed. Still, they appear increasingly irrelevant to those left behind and lead to local initiatives specific to the marginalised communities.

# Secret Garden

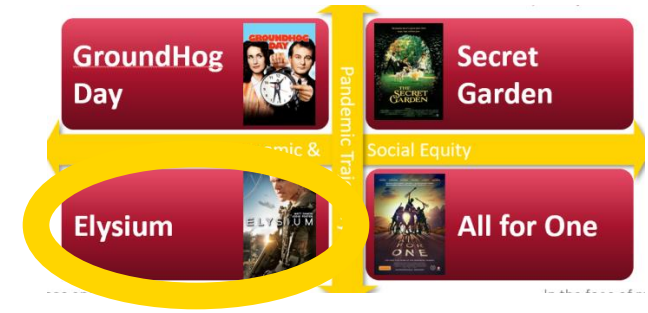
While New Zealand returns to a more relaxed health environment, collective lessons have been learnt that ensure the needs of everybody, especially the most vulnerable, are addressed.



- The pandemic has created a new understanding within New Zealand that society thrives when inequality between individuals is minimised. Creating individual wealth is a function of collective societal wellbeing.
- There's a sense that New Zealand has matured as a diverse community that can walk shoulder-to-shoulder in the face of the ongoing challenges of the 21st century.
- People now focus on the consumption of experiences rather than the pursuit of material goods, given climate concerns and ongoing supply chain fragility. As a result, sport and active recreation are experiencing significant growth, and there is a growing recognition of their role in enhancing local community relationships.
- Some political tensions have arisen as the critical issues of the emerging century are tackled directly. For example, ensuring social equality in the face of climate change mitigation has resulted in new legislation to eradicate wasteful consumption. However, defining this hasn't proven easy. Some of the more asset-rich sectors of society have pushed back politically on the rebalancing of resources to those most impacted by the change.
- Bonds between communities are more vital than ever, and deep respect for all cultures is reflected in the use of Te Reo now commonly heard in everyday conversation. Technology has helped here, too, with new forms of learning available through augmented reality platforms to support people in their daily routines. These have enabled deeper forms of connection and understanding with apps that support the Māori language and culture.
- The new republic of Aotearoa/New Zealand has redefined its place and identity within the global community. It is an international inspiration for societal inclusion as the second half of the 21st-century approaches.

# Elysium

Post-pandemic freedom has ensured novel and lethal virus strains are widely distributed. The health environment is unpredictable and the focus now is on 'looking after number one'.



- The memory of the 'team of five million' has receded as the pursuit of individual wealth drives ever-higher levels of inequality.
- Compassion and empathy appear in short supply as those with the resources ensure they insulate themselves from potential areas (and people) where health challenges are most significant. Moreover, the political environment is fraught as arguments of personal responsibility and freedom play out to the detriment of collective wellbeing.
- For New Zealanders who can afford it, consumption of material goods is at an all-time high. However, with health concerns back to the fore, these are primarily for use in the home environment with considerable spending on homewares and digital experiences. Virtual reality platforms are now prevalent, and eSports continues to enjoy substantial success as a result.
- The idea of 'community' seems to be a thing of the past, with seemingly little to connect the respective sections of New Zealand society. Often there appears to be a multitude of New Zealanders with increasing levels of mistrust and misunderstanding between groups.
- Finding virtual communities is less of a problem, and with new forms of 'Meta-like' virtual environments springing up, people seem content to remain in their walled-off spaces.
- Ongoing health constraints and a lack of social cohesion have transformed the idea of what 'normal life' looks like within New Zealand. A sense of national cohesion has been replaced by a fragmented and fearful environment that drives a corrosive politics that only advantages a few.

# All for One

In the face of renewed pandemic risks and challenges, the new normal is for an elevated level of social and financial consideration to support all New Zealanders.



- In the face of ongoing and unpredictable health risks, most New Zealanders understand that creating and maintaining societal wellbeing relies on everyone having adequate access to sufficient social and financial resources.
- The strong sense of solidarity across New Zealand has ensured that targeted responses to address historic challenges (e.g. poor housing environments) are finally being overcome to combat increased global health threats.
- Renewed restraints on events are a continued challenge as clubs endeavour to maintain ongoing activities programmes. There is solid demand to keep these going, but the high risk has seen many individuals pull away from the team environment. Technology is increasingly providing solutions here, though, with many engaging in eSport activities that enable engagement through the virtual sphere.
- Public policy to protect all New Zealand citizens from the vagaries of a changing health environment has been criticised by some sectors. In particular, the need to support the more risk-averse has prompted less tolerant perspectives to emphasise personal responsibility, but these are generally at the margins of political discussions.
- There have been considerable efforts made to ensure access to digital environments is widely distributed across communities to ensure no individuals are left isolated by the reliance on technology. Consequently, community innovation is high, with new uses being found daily to put cutting edge tech to use in furthering community projects.
- Through the focus on community wellbeing, New Zealanders are reporting a deeper level of individual freedom despite the significant ongoing challenges of the 21st-century.